

September 2025

FREE monthly community magazine for Kumeu
& surrounding townships

Kumeu

Courier



- Safer communities
- Home & garden
- Health & beauty
- Property market report

centrallandscapes.co.nz
598 Swanson Rd, Swanson



Greetings

Spring has sprung, the grass has riz,
Wonder where my mower is? (with apologies to the author)

Spring officially starts on Tuesday September 23 this year with the vernal equinox (equal day and night) but the grass is already well on its way – meaning more mowing.

Animals tend to take care of the paddocks but the verges and lawns still need a regular cut to keep them looking good.

The garden is rocketing too.

September is also the start of the strawberry season.

And the home and other buildings usually get a spring clean.

It's also local election time with postal voting from Tuesday September 9.

Vote for who you want to represent you – see this issue for who's standing.

Rodney Ward Councillor Greg Sayers is re-elected unopposed and has lashed out about some Rodney residents getting way above the 5.8% rates rise they expected. He says some rates have risen 20%, 30% or more.

Greg says he and Rodney Local Board members want an annual rates cap and other measures introduced to “protect our communities from being unfairly penalised simply because their property values did not follow the same downward trend as the rest of Auckland”.

September should see food and power costs start to come down a bit.

It's been a tough old winter with out-of-season fruit and veg like tomatoes high in price and adding to cost of living issues.

Last time I looked it hasn't been much better but I'm hopeful things will improve later this year or by early next year, particularly with many mortgages being set at lower rates.

Rates, insurance and many other costs have gone up so I expect our mortgage change will help meet those.

Climate change seems to be having an impact- most days this winter it's been about two degrees up on the normal average temperature.

That's not only kept us a bit warmer but has encouraged plant growth.

Now back to the mowing – so long as petrol prices don't suddenly rocket and US President Donald Trump's antics don't put the world in a downward spiral.

Editor , Geoff Dobson



Circulation is 10,000 print copies. Advertising starts at only \$100 + gst which includes a business card, editorial and an image.
Get in touch with Gabrielle today
editorial@kumeucourier.co.nz

ENQUIRIES / FEEDBACK / ADVERTISING:
Geoff Dobson
P 027 757 8251
E geoffdobson2017@gmail.com
W www.kumeucourier.co.nz

COVER PHOTO: Central Landscape Dan Risetto (C), with his daughters Summer (L) & Charlotte (R)
PRINT RUN: 10,000 copies, Treehouse Print
EMAIL DATABASE: Sublime NZ

DISCLAIMER: Articles published are submitted by individual entities and should not be taken as reflecting the editorial views of this magazine or the publishers of The Kumeu Courier Limited. Articles are not to be re-published unless written consent is granted from the publisher (Graham McIntyre).

What's inside

- 3 People & Places
- 9 Safer Communities
- 10 Community News
- 16 Food & Beverage
- 17 Property Hub
- 19 Property News
- 24 Property Statistics
- 28 Property Market
- 41 Home & Garden
- 49 Young Learners
- 51 Aged Care
- 54 Health & Beauty
- 57 Area Columnists



People & Places

Central Landscape Supplies Swanson - Celebrating 35 years of 'Digger Dan'.



If you've ever ordered landscape supplies out West, chances are you've heard of 'Digger Dan'.

This year, Dan Risetto and his hardworking team are celebrating 35 years in the landscape supplies business, and it's been quite the journey

It All Started in 1990...

Back in 1990, Dan's father, Wayne Risetto, opened the very first Central Landscape Supplies on O'Rourke Road in Penrose. The business moved a couple of times before finding its home in Swanson in 2003. In fact, the Swanson yard first opened a bit further up the road, before relocating to the current site at 598 Swanson Road.

Dan Risetto (L), Father Wayne and late brother Phillip (R)

A Family Legacy



Dan joined the business straight out of school, starting as a yardman, then progressing to truck and loader driving. By 2005, he'd taken over ownership

of the Swanson yard and even ran three locations at one point-Avondale, The Concourse, and Swanson.

Today, Dan and his wife Nichole are the powerhouse duo behind the Swanson site. With 25 years at the current

location, they've built a reputation for friendly service and genuine local support.

Supporting the Community

Giving back is a big part of what Dan and Nichole do. Central Landscapes Swanson sponsors local schools, sports teams, business events, and community projects.

"Central Landscapes Swanson has been right there with us since the 2020/21 season and we're thrilled they have signed on through to the 2027/28 season. Their generosity means we can continue giving local kids the chance to enjoy athletics, make friends and feel proud to be part of our community."

Tyron Lagerwall - Riverhead Amateur Athletics Club.

A Yard That Does It All

Swanson is now one of the largest yards in the Central Landscape Supplies group. From rich garden soils and composts to decorative stones and pebbles, they've got just about everything to help bring your outdoor vision to life.

No room for a truckload? No problem. Dan and his team offer bagged options to cater to smaller spaces-perfect for modern, compact gardens.

Service With Heart

It's not just the products that make Swanson stand out. The team is known for their helpful advice, skilled delivery drivers, and genuine care for customers. It's no surprise they were named Runner-Up Franchise of the Year in 2024. "The best thing about my business is the customers," says Dan.

They proudly service West Auckland and growing regions like Kumeu, Huapai, Waimauku, Riverhead, and Hobsonville-and even make deliveries out to Piha and Helensville.

A True Family Business

The Risetto's don't just work in the community-they live and breathe it. Nichole handles accounts and operations, and now their three daughters, Summer, Charlotte and Willow, are getting involved during school holidays and weekends. It's truly a family affair.

Here's to 35 years of grit, growth, and great gardens. Congrats, Digger Dan!

598 Swanson Rd, Swanson, Auckland

swanson@centrallandscapes.co.nz Ph: 09 833 4093

Team member spotlight: Emma Steel



Emma, one of our exceptional physiotherapists & Director at the Riverhead clinic, brings a wealth of experience and a deep passion for sports rehabilitation to our community. Originally from Ayrshire, Scotland, Emma moved to New Zealand in 2009, settling first in Hawke's Bay before making Auckland her home. She now lives locally with her partner James, a pilot, their two young children, and two

lively Labradors.

With 15 years of physiotherapy experience, Emma holds a BHSc (Hons) in Physiotherapy from Queen Margaret University in Edinburgh and a Master's in Physiotherapy (endorsed in Sports) from Otago University. Her clinical focus lies in sports rehabilitation and injury prevention, and she's worked with a wide range of teams, from basketball, netball, soccer and rugby.

Emma's career highlights include serving as lead physiotherapist for the New Zealand Football Ferns and Triathlon Australia, supporting elite athletes on the international stage. She's also a keen triathlete herself, having represented both Great Britain and New Zealand at age-group level in duathlon and triathlon.

Emma's hands-on experience as both a clinician and athlete gives her a unique perspective on recovery, performance, and the journey back to full strength. Whether you're a weekend warrior or a seasoned competitor, Emma is passionate about helping you move better, feel stronger, and stay active.

You can find Emma at our Riverhead clinic on Wednesdays and Thursdays. Or Hobsonville on Mondays.

Want to book in with Emma or learn more? Give us a call on 0273136036



riverhead
PHYSIOTHERAPY • PILATES

- REFORMER PILATES STUDIO
- MASSAGE THERAPY & LYMPHATIC DRAINAGE
- ACUPUNCTURE / DRY NEEDLING
- ACC ACCREDITED PROVIDER
- PRE/POST SURGICAL REHAB
- SPORTS INJURIES

0273136036

1058 Coatesville-Riverhead Hwy

physio@riverheadphysio.co.nz

www.riverheadphysio.co.nz



Mindbody app
for pilates

Kiddywinkles Sets the Standard in Early Learning – Right Here in Kumeu



If you live in Kumeu or Huapai, chances are you've driven past Kiddywinkles Early Learning Centre—right across from Huapai District School. What you may not know is that this local centre is gaining national attention for the very things parents value most: trust, care, school-readiness, and community connection. At last weekend's Early Childhood Council Conference, which represents over 1,500 centres

across New Zealand, Kiddywinkles was front and centre. Owner Allen Court received the Outstanding Achievement Award for his leadership in raising the standard of early childhood education. From mentoring teachers through the centre's in-house Teaching Council to creating parenting resources like the Number 1 best-selling book 'Big Leaps from Little Feet' (Amazon.com.au), Allen's commitment goes far beyond day-to-day operations.

Kiddywinkles was also nominated for Exceptional Private Centre—a recognition that speaks volumes about the consistency and quality across the two Kiddywinkles' locations. Their close partnership with Huapai District School ensures children don't just leave the centre "ready"—they arrive at school confident, curious, and eager to learn.

Karl Bryant, Head Teacher for the preschoolers, was nominated for the Teaching Excellence Award. With his creative use of puppets to teach emotional regulation and his role in building intergenerational connections through visits to the local retirement village, Karl helps children develop not just academically, but socially and emotionally too. Even their centre-wide food drive, Can by Can, has become a hands-on lesson in empathy—raising over 2,000 cans of food for the Salvation Army.

When families choose Kiddywinkles, they're choosing a proven, nurturing journey from babyhood to school—and

"From First Steps to School-Ready - Kiddywinkles leads the Way"



Phone: 09 412 2209
kiddywinkles.co.nz
Location: Across from Huapai District School
Book Your Visit Today – See Why Families Choose Kiddywinkles



inspiring young minds

2025 ECC Outstanding Achievement Award - Awarded to Kiddywinkles' Founder, Allen Court

a community of educators who know every step matters. Looking for the right place to begin your child's learning journey? Kiddywinkles isn't just close by. It's ahead.

Gemma Donaldson, New energy, proven commitment"



I'm standing for the Rodney Local Board (Kumeū Subdivision) because this is our home, and we deserve action that's fair, transparent, and grounded in community values.

My husband is a police officer, and we're raising our two children here, both at local schools. Like many families, we want Rodney to be safe, connected, and well-served, with strong services, opportunities for our kids to thrive, and decisions made with integrity, respect, and accountability.

Service is in my blood. Politics, public service, and standing up for what's right have always shaped who I am. I've been there when it mattered most; supporting flood recovery, delivering essential services during COVID-19, and building food networks with marae, schools, community groups, and volunteers to ensure no whānau is left behind.

As leader of South Kaipara Good Food, I've strengthened food security, backed local growers, and coordinated emergency responses. I believe in collaboration, resilience, and the power of communities working together to solve challenges. I know how to listen, work respectfully with different views, and get results that make a real difference.

Rodney faces real challenges: SH16 congestion, repeated flooding, growth without matching infrastructure, and steep rates that aren't delivering improvements. Our community needs strong, principled, committed representation - and I'm ready to bring new energy and a proven record of delivery to the Local Board.

If you want someone who will show up, fight for fair rates, and push for real investment in roads, flood protection, and community services, I'm ready to work for you, for our families, and for the place we call home.



Gemma Donaldson

New energy,
Proven commitment

Your voice for
Rodney Local Board - Kumeū



Authorised by gemmadonaldson.co.nz

Are you Spring ready?



Getting your hair ready for Spring at Zash Hair is the perfect way to refresh your look and embrace the new season with confidence. As the weather warms up and nature blossoms, it's essential to update your hair care routine to keep your locks healthy, shiny, and vibrant.

At Zash Hair, we recommend starting with a professional consultation to assess your hair's current condition and discuss your desired spring look. Whether you're considering a fresh haircut, highlights, or a colour boost, our expert stylists tailor each service to suit your individual style and hair type.

Spring is a great time to indulge in deep conditioning treatments to repair winter damage and add moisture back into your hair. Our hydrating masks and nourishing serums will leave your hair soft, manageable, and glossy. Additionally, trimming off dull, split ends will give your hair a healthier appearance and prepare it for the upcoming months.

Embrace lighter, brighter styles by exploring balayage or subtle highlights that catch the spring sun beautifully. Don't forget to switch to a gentle, sulphate-free shampoo and incorporate regular heat protection to maintain your hair's health amid styling.

Finally, protect your hair from the sun's rays by using UV protection sprays and wearing hats when outdoors. At Zash Hair, we're dedicated to helping you achieve a fresh, vibrant look perfect for spring. Book your appointment today and step into the new season with gorgeous, revitalised hair.

Zash Hair

HAIR BY CARLA

77 Waitakere Road, Waitakere, Auckland

Phone: 021 814 663 zashhair





SKIN WELLBEING AND NUTRITION

treating the source of your skin concerns

- Skin & Digestive Consultations
- Skin & Nutrition Plan with Guidance
- Advanced Skin Treatment Facials
- Reflexology Facials
- Holistic Skin Mapping
- Hair Testing: Food Sensitivity & Nutrition
- Practitioner Grade Products
- Teen Skin Advice
- Swedish Relaxing Massage

Sarah Tumulty - Your Skin Nutritionist

FUNCTIONAL SKINCARE PRACTITIONER & NUTRITIONIST



KUMEU, AUCKLAND PHONE: 0274473013

WWW.SWANSKINANDNUTRITION.COM

Spring awakening




As the first blossoms unfurl and daylight lingers just a whisper longer, September arrives with soft promise – a quiet nudge toward renewal. It’s a time to shed winter’s weight and step into freshness, not only in nature but in yourself.

Though early spring in New Zealand may still feel cool and wet, our skin is transitioning too. Stepping back into

seasonal rhythms, reawakening its glow. The shift invites deeper hydration, gentle exfoliation to sweep away dullness, and treatments that encourage circulation and lightness of being.

This is the season to care for yourself tenderly. Let hydrating facials restore moisture; gentle exfoliation reveal new luminosity; massage ease away winter tension. And as activities and occasions bloom – weddings, garden parties, weekend gatherings – remember to feel radiant from every angle: our waxing services ensure smooth confidence, ready for warm-weather dresses and sunlit smiles.

We’ve long offered Janesce Suncare Lotion (\$69), and now is the perfect time to begin using it consistently as a preparatory ritual for summer. Unlike conventional sunscreens, Janesce Suncare Lotion delivers gentle, plant-based protection through a blend of carrot seed oil, shea butter, and calendula – rich in antioxidants and natural UV-absorbers. It builds effectiveness progressively, becoming fully active after around seven consecutive days of daily application – making




BEAUTY & SPA STUDIO

Your Sanctuary for skin, self & soul

Holistic beauty + wellness in the heart of Waimauku

- Skin Consultations
- Massage and Facials
- Waxing and Tinting
- Manicures and Pedicures

Gift Vouchers Available



lovesoul.co.nz * 09 411-5266 * hello@lovesoul.co.nz
8 Waimauku Station Road
Walk-ins welcome

September the ideal month to begin. While it does not carry a traditional SPF rating, independent testing in 2014 suggested it could achieve around SPF 15 after one application, with protection increasing over time. It’s also safe for the whole family – including children and those with sensitive skin and doesn’t inhibit vitamin D synthesis.

This month, indulge in our Spring Indulgence Package – a 60-minute Wellness Facial and a 60-minute Relaxation Massage for \$235 (normally \$258). Personalise your escape with an upgrade to a Hydration Boost Firming Facial for an extra \$20 or a Hot Stone Massage for \$50. The perfect way to celebrate your own seasonal rebirth.

Let this be your month to emerge refreshed, radiant, and ready for all that spring brings. At lovesoul, we help you awaken – to the season, and to your most luminous self.

Allan Wallace to end 60 years in building industry



Allan Wallace of Kumeu is retiring from building this year at 75 after 60 years in the trade.

His hammer has been painted gold (occasionally a nail gun is now used) and mounted on a totara block derived from 800 to 1000-year-old logs removed from a river to help build a new home at Scotts Landing, Mahurangi East, along

with his name in paua shell, presented by his team to mark 60 years.

Leaving Rutherford High School, Allan began in 1965, first working for Ray Fletcher then Helensville-based Pickering (Malcolm) and Pengelly (Dan) builders.

Allan has won many building awards over the years (including Supreme Auckland and three national House of the Year titles), especially after forming his own company Allan Wallace Builders Ltd in 1973.

He learned to build from scratch, doing everything required from retaining walls and foundations to the finishing work, quickly establishing a reputation for quality work, whether renovations or new builds.

Allan can point to many projects throughout Northwest Auckland he has been involved in.

They include schools such as Waioneke, St Chad’s Church, hundreds of homes (including renovating the Annandale homestead) and other buildings such as Western Caskets in Access Road, the Kumeu Rugby Football Club and the Norwest United Football Club (now West Coast Rangers) and commercial buildings either side of McDonald Lane in Kumeu.

He’s trained about 24 apprentices over the years, including son Johnny, now 47, and his first apprentice Joseph Hickton, now a Tauranga-based builder. Johnny intends to start his own company J. Wallace Builders Ltd.

Allan’s last job is finishing a new home at Scott’s Landing

which has taken about five years and required relocating the original homestead and doing extra buildings for the owner. He started his building life working with native timber and says it’s been a pleasure to end his career working with native timber again.

After retiring, Allan intends to talk with Housing Minister and Kaipara ki Mahurangi MP Chris Penk about building issues. He expects all his team of four to find good building jobs despite the current economic climate as he says they are good tradespeople.

Married for 53 years, wife Dale has been a big part of the business looking after the office. They look forward to doing whatever they please in retirement.

Allan says he has enjoyed working with clients to help them achieve their dreams, and the technical challenges involved in building.

Celebrating 100 years of St Chad’s Anglican Church Huapai



Join us in celebrating the 100th anniversary of St Chad’s Anglican Church Huapai on the weekend of 27-28 September. This milestone event is a wonderful opportunity to reflect on the rich history of our church and community,

and to look forward to the future. Saturday, 27 September: Open Day From 10am to 4pm, the church will host an open day filled with activities for all ages. Visitors can explore old photographs and historical information that showcase the church’s journey over the past century. There will be games on the lawn, providing fun for families and friends. Additionally, you can learn about the current initiatives and activities that St Chad’s is involved in today.

Sunday, 28 September: Church Service On Sunday at 10am, join us for a special church service with the Bishop of Auckland. This service will bring together visitors, church members, and the wider community to celebrate this significant occasion. It’s a great chance to get a sense of Huapai over the last 100 years and envision what it might look like in the future. For more information, please contact info@saintchadshuapai.com.

NOR-WEST AND KUMEU GLASS SERVICES

“Specialists in Windscreens & Glazing”

Some of our services include: Residential and Commerical Glass Repairs - Automotive Glass Repairs - Cat/Dog Door Installs - Splashbacks - Mirrors - Picture Frames - Double Glazing - Caravan and Boat Windows - Car and Truck Mirror Repairs - Stonechips

CALL - 09 412 9914 | nwkg@xtra.co.nz

9a Weza Lane, Kumeu, Auckland 0810

Te Henga wetland restoration gets global recognition



Te Henga’s Matuku Link Wetland Centre has been recognised on the world stage. Matuku Link, a community-led

wetland restoration project, won one of only three Gold Star Awards in the world at the Wetland Link International (WLI) Star Wetland Centre Awards, announced during the United Nations 15th Conference of the Contracting Parties of the Convention on Wetlands (COP 15) in Victoria Falls, Zimbabwe.

Matuku Link celebrates this win with open days on November 22-28 to which all are welcome with guided tours and an exhibition on wetlands provided.

The Star Awards are the world’s only accreditation recognising excellence in wetland education and visitor engagement.

Matuku Link joins centres in Australia and Hong Kong as the only Gold Star winners, selected from 39 recognised centres worldwide.

Judges praised Matuku Link’s volunteer-led model, strong educational focus, and deep community roots.

“Matuku Link has achieved something extraordinary,” says Awards Judging Panel Chair Connor Walsh.

“They’ve shown that a small local centre, powered by passion and purpose, can stand shoulder to shoulder with the world’s best.”

With 9% of New Zealand’s wetlands remaining, Matuku Link is working to shift perceptions from “smelly swamps” to “biodiversity beauties”.

Wetlands are vital ecosystems, filtering water, storing carbon, and providing habitat for rare species like the matuku-hūrepo (Australasian bittern), tunakuwharuwharu (longfin eel), and pāteke (brown teal), says Matuku Link, which takes its name from the bittern.

Founded in 2016 after a \$2.04 million fundraising campaign, Matuku Link is a charitable trust run by five trustees and powered by volunteers.

Since purchasing its wetland and bush property in Te Henga, the group has transformed an old barn into a Wetland Education Centre, constructed two native plant nurseries, and with support from Jobs for Nature created boardwalks and trails through Auckland’s largest mainland wetland.

Every year Matuku Link also sees more than 1000 school aged children visit through their education programme, school holiday programme, and family-oriented events. Matuku Link’s education programme focuses on real hands-on science within the wetland.

By fostering curiosity and connection Matuku Link says it is helping inspire the next generation of kaitiaki to protect New Zealand’s remaining wetlands.



Panel Beating
Spray Painting
Insurance Approved
Quotes & Assessments
Courtesy Cars
Low Bake Oven
Restorations
Rust Repairs
Structural Repairs
All insurance work

23 Wookey Lane
Kumeu

PH: 412 8239

castlepanelbeating@orcon.net.nz

www.castlepanelbeating.co.nz



WHEN YOUR VEHICLE
IS IN NEED OF REPAIR IT'S
YOUR RIGHT
TO CHOOSE THE REPAIRER



Safer Community

FIRE, FIRE, FIRE



It's a good idea to talk to your children about fire safety, how to avoid starting fires, and what to do if there's a fire in your home.

Children as young as five can learn what to do in a fire emergency. This is lifelong learning that they will take into adulthood. Children also need to understand that fire can be dangerous.

Talking about what to do in an emergency

If a fire starts in a room, a person has about 3 minutes to get out before the room is engulfed in toxic smoke or flames that will kill them.

Teach your children to get out and stay out if there's a fire. If they see a fire or hear a smoke alarm, tell them to:

- Get out of the house FAST (using your escape plan)
- Shout "Fire, Fire, Fire!"
- Go to the agreed safe meeting place

Talking about fire

When talking about fire, children might ask about people dying in fire incidents. You should provide truthful answers without making the child afraid.

You can tell your child about firefighters and how they rescue people in fires. However, sometimes firefighters might not arrive in time to rescue everyone. A fire can also be burning so fiercely that it's not possible to rescue people.

That's why it's so important to have smoke alarms and an escape plan to know what to do in a fire. Remember, get out, stay out.

The Get Firewise programme

Get Firewise, is an in-school programme that centres around fire safety for children. Fire and Emergency have developed this course as it uses best practices in teaching safety information to 5 and 6 year olds.

Many children come home excited about what they've learned in the Get Firewise programme. You can use this as an opportunity to discuss fire safety around your home.

The programme encourages families to:

- carry out fire safety checks and prevent fires starting
- install smoke alarms in hallways and living areas, allowing early warning

- develop escape plans that include determining two ways out of every room and establishing an agreed family safe meeting place

- practise getting out of all the rooms in the house and meeting at the safe meeting place

At Waitakere Fire Brigade we are active in assisting our local Pre-School and young School Pupils easy access to our station, appliance and crew to ensure fire safety messages are understood and communicated back to their family.

Information about fire

For a fire to burn it needs:

- Fuel
- Heat
- Oxygen



The fuel is the substance that is flammable or can burn (for example, wood, fabric, glue, petrol, rubbish, grass, trees and people). The fuel can be a solid, liquid or gas.

The heat can be:

- Direct flame (for example, lighter, candle, match or open fire).
- Radiant heat or heat that is radiated across a space from the source of the fuel but is strong enough to ignite a fuel (for example, heat from an electric bar heater, glowing paper, some distance away or the sun burning (our skin)).
- Conducted heat or heat that is transmitted from one object to another by direct contact (for example, a hot spoon after it has been in a container of hot food or a poker in a fire).
- Connected heat or heat that is carried through air currents (for example, hot air carried through the air from a bush fire to start another bush fire some distance away).

The oxygen comes from the air.

For a fire to start in a room in a house there must be:

- Fuel or something to burn, for example, paper or fabric.

- Heat from a match, burning cigarette, the stove, a heater or an overheated electrical circuit.
- Oxygen from the air in the room.

If one of these is not present, the fire will not start. If one of these is removed, the fire will go out.

A fire in a wood burner will go out when all the wood has burnt because there is no more fuel.

A camp fire can go out if it rains as there is not enough heat to keep the fire burning.

A pot lid put on a burning pan puts the fire out because it deprives the fire of oxygen.

Safe Fires

A safe fire can be described as a fire that is:

- Lit in a suitable place, for example, in a fireplace, a barbecue or an incinerator.
- Not so large that it is out of control – which usually means the amount of fuel is controlled.
- Being watched and controlled by a responsible adult.

Unsafe Fires

An unsafe fire is a fire that is:

- In the wrong place, for example, a fire in a chip pan, a fire in a bed or chair, a rubbish fire that is too close to a house or near trees or dry grass.
- Out of control, burning fast and using more and more fuel.
- Burning without people knowing about it or without people watching it and controlling it.
- Placed where people, especially young people or the elderly, could fall into it or touch it and get burnt. For example, an open fire or wood burner that does not have a guard that will stop children or adults falling on it and getting burnt.

If you would like to engage, and are looking for a starting point, call me and I will point you in the right direction

Call Graham McIntyre, Phone 0276 320 421 or email graham.mcintyre@fireandemergency.nz

Graham McIntyre,
Chief Fire Officer –
Waitakere Fire Brigade



Community News

Introducing the 111 Vet VIP Pet Club – Limited Memberships Now Available

Peace of mind, exclusive savings, and the very best of veterinary care have just arrived in Kumeu. 111 Vet Clinic – your local 24/7 emergency and regular veterinary hospital – is proud to launch our brand-new VIP Pet Club,

designed for pet owners who want comprehensive coverage, predictable costs, and integrative options that go beyond the basics. For just \$1,270 per year (or \$127/month) per pet, our VIP members receive:

- 4x standard consultations @\$75 each = \$300 value
- 1x routine annual vaccination (Felocell for cats or 5 in 1 for dogs) =>\$115
- 12x acupuncture sessions @ \$125 each = \$1,500 value
- 1x routine wellness blood test @ \$240 value
- Waived 20% surcharge on all afterhours drugs – savings plus!
- 10% off drugs during daytime rates – potentially save hundreds of dollars!
- Regular consultation pricing all hours (except 12am – 6am) – save \$45-\$125/visit

That’s over \$2,150 in value for just \$1,270 – plus unbeatable peace of mind knowing your pet has round-the-clock access to expert veterinary care,

integrative therapies, and discounted after hours support. Even better, members who pay annually upfront save the equivalent of two months’ payments. Spaces are strictly limited as we roll out the VIP Pet Club. Once this first intake is filled, VIP enrolments will close.

Don’t miss the chance to be one of the founding members of this exclusive program. 111 Vet Clinic – leading the way in West Auckland with compassionate, cutting-edge care, 24 hours a day. To find out more visit us at 48 Main Road, Kumeu or phone 09 86 96 111. Join the VIP Pet Club today – your pets deserve it.



Dr Fiona Mead BVSc.
CVA., PGDipABM

For REGULAR & EMERGENCY vet care we offer:

 Free Dental Check Ups

 Take the Guess Work Out of Your Pets’ Healthcare

 Ask us about our “111 VIP Pet Club” savings

 48 Main Road, Kumeu

 office@111vetclinic.co.nz

House of Travel Hobsonville – Meet the Team

SAM – She’s witty, confident, and the queen of clever itineraries. She leads our dedicated Cruise Centre and has a knack for matching people to their perfect cruising style. Having just returned from an epic Viking Cruise in Alaska she’s now on a mission to convert everyone to the joys of small-ship cruising. sam.p@hot.co.nz

TALITA – Joins Sam in the Cruise Centre. With a bucket load of cruise experiences under her belt; her no-nonsense approach means you always get the real deal – honest advice, sharp insights, and a genuine passion for helping people make the most of their time away. talita.toomata@hotmail.co.nz

NAMY – Our senior consultant, Namy, brings a wealth of travel experience and a genuine knack for navigating airfares. From complex round-the-world itineraries to multi-stop adventures, she’s all about finding smarter ways to take to the skies—with shorter transit times, seamless connections, and clever logistical solutions that just make sense. namrata.patel@hotmail.co.nz

SUNI – Brings graciousness, humour, and genuine hospitality to every client interaction. She’s explored much of Asia and Aussie hotspots and she’s always ready to share her insider tips! sunisa.c@hotmail.co.nz

ELLIE – Our UK & Europe specialist; she’s our go-to Brit with a bubbly energy to match. She’s all about clever logistics & helps you tick off your European bucket list without wasting hours in airports favouring experiences that immerse you in the moment. ellie.g@hotmail.co.nz

DEEPTI – Dee brings a wealth of experience, a driven spirit & a suitcase full of experiences. From cruises to coach tours, she’s lived the many journeys she has helped plan. All of which she then enthusiastically shares with her clients to make their own trips memorable! deepiti.mehta@hotmail.co.nz

NOW OPEN MON-FRI 9AM-5.30PM
+ SATURDAYS 10AM-3PM



NEW ZEALAND’S MOST AWARDED TRAVEL GROUP

Cnr Hobsonville Point Rd & De Havilland Rd
09 416 0700 • hobsonville@hotmail.co.nz



HOUSE OF TRAVEL
HOBSONVILLE

Community News

We’re grateful for the chance to share our story with our local community and would love to see you in store sometime. “Wherever you go, go with all your heart.” – Confucius

See you around! Mike (Buzz) and the team at House of Travel Hobsonville

NZ Secondary Education overhaul: What parents need to know

The Government has proposed major changes to secondary qualifications, replacing NCEA with a simpler framework now out for public consultation. If adopted, these would be the biggest reforms in two decades.

From 2028, Year 11 would no longer sit NCEA Level 1. Instead, students would complete a Foundational Skills Award that certifies literacy and numeracy. English and Mathematics would be compulsory in Year 11 alongside other subjects.

For Years 12–13, NCEA Levels 2 and 3 would be replaced by the New Zealand Certificate of Education (NZCE) and the New Zealand Advanced Certificate of Education (NZACE). Students would take five subjects and need to pass at least four to earn each certificate. Teaching of the refreshed curriculum would begin in 2026 for incoming cohorts, with NZCE starting 2029 and NZACE in 2030.

The aim is clearer pathways and stronger core skills. However, the transition and greater emphasis on end-of-year assessments will require support, particularly for students with additional learning needs or language barriers. Targeted and personalised tutoring can build the literacy and numeracy abilities required for the Year 11 Foundational Skills Award, provide subject-specific coaching, and develop exam readiness for NZCE/NZACE.

Success Tutoring NorthWest is a teacher-led tutoring centre in Westgate. Our tutors specialise in providing

OPEN NOW!



Success Tutoring
NorthWest

Level 1, 8/48 Maki St, Westgate 021 075 1475

BOOK YOUR FREE ASSESSMENT TODAY!

motivational support in English and Mathematics based on the New Zealand curriculum. We offer both one-on-one and small groups. Our members enjoy flexible scheduling, no lock-in contracts and screen-free learning hubs. To celebrate our Grand Opening on 30th August, we are offering 50% off our joining fee and a discounted membership price of \$65 per week for twice weekly small-group sessions.

Contact us via email on northwest@successtutoring.com or give us a call on 021 075 1475 to find out more.

Branding anything legal since 1994

With a wealth of industry experience, we know what to do, who to see, and where to go to make things happen. You get to relax knowing you are in secure hands. We guarantee super-friendly easy communication, understanding and lateral thinking staff, fast and efficient service, and free artwork, design, and strategy ideas. Use of our in-house webshops and a raft of industry contacts. We will listen and then present a variety of cost-effective options to engage your market.

From pens, trophies, apparel, and flags to custom websites, we will treat your brand as if it was our own. Our aim is to WOW you as we have for the many companies that continue to use our services. councils, schools, and our favourite, not-for-profit charities.

Some of our valued clients include Breast cancer NZ, Youthline, Monarch Trust, Bowel cancer NZ, Brain Injury Association, Freemasons, Rotary NZ, Valvoline, TR Group, Northland Waste, Touch NZ, Northern Stars Netball, Vodaphone, SkyCity, Hitachi, National Road Carriers, G J Gardner and Auckland Transport.

Smashing Promotions

5/19 Factory Road, Waimauku 0812

You can also contact them at info@smashingpromotions.nz or by calling (64 9) 412 6235

SMASHING PROMOTIONS

Branding Anything Legal

412 6235

Est 1994 SMASHING.NZ

Senior pets need love too



As our beloved pets age, their needs begin to change—just like ours do. Senior cats and dogs often experience health challenges that can quietly affect their comfort and quality of life. One of the most common issues is arthritis, which causes joint pain and stiffness. You may notice your pet slowing down, hesitating to jump, struggling with stairs, or showing stiffness after resting—especially during colder weather.

Pain in pets can be subtle. Dogs may seem “just a bit slower,” while cats might stop grooming or retreat to quiet places. They rarely cry out, so it’s important to know what to look for. Limping, licking at joints, a change in posture, or reduced interest in play can all be signs of discomfort.

There’s a lot we can do to keep our older pets comfortable and happy. Regular veterinary check-ups—at least once every six months for senior pets—can catch problems early. Conditions like arthritis, endocrine problems, dental disease, kidney or liver issues, weight gain, or even early signs of cancer are all more manageable when caught sooner rather than later.

There are safe pain relief options available for arthritic pets, along with joint supplements, therapeutic diets or physiotherapy options. Simple changes at home—like warm bedding, non-slip mats, or ramps—can also make a big difference.

If you have a senior pet at home, take a moment to observe them closely. Are they moving differently? Eating less? Avoiding activities they once loved? These could be signs that they need a little extra support.

Aging is a natural part of life, and with the right care, our senior companions can enjoy their golden years in comfort and with dignity. They’ve given us their best—now it’s our turn.

Dr Gary Duggal
Huapai Vet Clinic

Dr Gary Duggal (BVSc)

☎ (09) 412 2223
📍 371 main road. Huapai
✉ Huapaivet@gmail.com

World challenge tag paintball



Come down to world challenge tag paintball on Ararimu valley road and discover freshly painted art and exciting gameplay.

Matt has worked tirelessly on the paintball fields for the last few years and has been upgrading and improving the various obstacles and barricades to keep things interesting for players.

A couple of months ago he was approached by Stefan, a young artist working under the name RVST ART who was looking for opportunities to improve his skills and showcase his work.

Matt was keen to spruce up the plain gray barricades with some cool new murals, so Stefan began with one field. After the first, they agreed on doing a vibrant aztec theme for a field of wooden pyramids.

The finished area features fierce south american jungle animals in a geometric, colourful style which matches the wild energy of a paintball or airsoft game perfectly.

Stefan has been making art since birth, but has ramped up his passion over the last 3 years into an ever-growing body of work including murals, standalone pieces, commissions, stickers, 3D artworks, and much more.

If you are keen to get some eye-catching, energetic, and unique art for your home or business you can reach him: instagram: @rvst_art Facebook: RVST website: RVST.SHOP

This is a “must see” so get your mates together for a fun adventurous round of paintball so you can experience this in real life!! Stay tuned - more murals will be popping up shortly at the field.

Paul Miller
Freedom Drivers Hobsonville

+64 021 321 869 | (09) 302 2377
hobsonville@freedomdrivers.co.nz

- Hospital & Medical Appointments
- Specialist Treatments
- School Transport
- Airport Transfers
- Shopping & Social Trips

ACC Approved • Total Mobility Cards • Eftpos

What do I do when someone dies?

Historically, many people have contacted the Police which for many deaths is not required. The Police should only be contacted in situations where a sudden, and unexpected death has occurred; in other words, a person who was not expected to die to due to illness suddenly dies or the death is because of an accident. The Police will attend, they will take statements from those present and will check with medical professionals who are known to the deceased to ensure that the death is unexpected Where it is confirmed there is no medical professional able to identify the likely cause of death due to the deceased’s medical history, the death is then likely to be placed under the jurisdiction of the Coroner to determine a probable cause of death. The coronial examination can take a few days, and it is during this period that the family can start working a funeral director to make plans for a suitable farewell.

When someone dies following a known illness or known medical event, there is no requirement for Police involvement. All that is required is two phone calls, one to the deceased’s regular medical attendant (Doctor) or Hospice is under their care, the other your chosen funeral director. The Doctor will need to issue a medical cause of death certificate, and if the deceased is to be cremated necessary cremation certification. Note, there is a requirement for the doctor to sight the body after death where a cremation is to occur. Funeral Directors will always wait to receive confirmation that the doctor has completed such certification, or that the doctor has agreed to the transfer taking place with the certification

DAVIS
FUNERAL CARE

09 835 3557 | WWW.DAVISFUNERALS.CO.NZ

requirements being completed at the funeral home prior to any transfer activity takin place.

The most important thing is to slow down; there is no hurry. Your Funeral Director will guide you seamlessly through every step of the process.

Do you have a question or topic you would like us to cover? We would welcome your sending feedback to mike@davisfunerals.co.nz



Come and check out our new
Delicatessen, Coffee, Juice & Ice Cream Bar

BORIĆ Food Market

1404 Coatesville - Riverhead Highway, Auckland
www.boricfoodmarket.co.nz

VEHICLES WANTED
WE PAY TOP CASH

For any **CARS, VANS, UTES, TRUCKS, 4X4**
Dead or alive, damaged, de-registered
Mechanical problems, no WoF, we buy it.

Free Pickup

Or text 021 344 449

0800 333 398

Conditions Apply



Our preschool and after-school programmes will be running right through to Saturday 20th September 2025 – just in time for the school holidays to begin.

Linktree: <https://linktr.ee/temanawa>

Cat lovers - we need your help



Financial and food donations are also urgently needed to cover vet and other costs associated with our sanctuary. The NZ Cat Foundation also supports community Trap-Neuter-Return programmes and helps feed and care for many cats living in the community. Please visit our website for more information on volunteering and how to donate at www.thenzcatfoundation.org.nz. You can also email - volunteers: volunteer@thenzcatfoundation.org.nz. nz donations: info@thenzcatfoundation.org.nz.

Crescendo

Crescendo has recently opened at Te Puna Creative Hub in Henderson, Auckland. Offering everything from song recording to sound design, podcasting and music production lessons and even film and photography capture and editing. It's never too late to try something new, so if you've always wanted to have a song recorded in a professional studio, start a podcast or learn music production Crescendo's experienced engineers can guide you through the process.

Crescendo is a social enterprise that uses music to engage marginalised and disconnected rangatahi/young people, empowering them with industry skills and experience and seeing them carve their own meaningful pathways in the world. Crescendo is focused on empowering youth with a powerful combination of wellbeing, technical and employability skills, preparing young people for the future of work in the gig economy and connecting them to employment pathways in the creative industry; an industry with over 57,000 jobs in Tāmaki Makaurau/Auckland alone.

Crescendo's youth programmes bring people together over common themes of music and creativity. Over 10 weeks, youth work with industry mentors on a mix of 'power skills' (self confidence, resilience, wellbeing) and course specific skills culminating in a graduation concert at Te Puna's Kōmanawa Theatre.

We are innovating in the charitable sector by operating as a social enterprise. The combination of our Charitable Trust combined with our Commercial Music Studio allows us to stay committed to sustaining our impact model whilst growing our income diversity stream, and providing a direct pathway for youth employment. We operate a commercial music studio, Crescendo Studio, delivering audiobooks, podcasts, sound design and music production projects. State of the art facilities that we are keen to hire out and offer community rates.

To find out more about Crescendo's recording services,
please contact

studio@crescendo.org.nz, call 021 0902 7816, or visit
crescendo.org.nz



Let's be honest, a Colonoscopy probably isn't topping your list of "fun things to do." The thought of the procedure, the preparation, and the waiting can often feel

overwhelming. But it's a small step that can make a big difference to your health, your future, and you and your family's peace of mind.

Early detection often leads to better outcomes, and we understand that waiting for a procedure can be a stressful and uncertain time on top of any symptoms. Hence we have been working really hard to solve the problem of timely access and are proud to be able to offer confirmed appointments within 7 working days for most standard Colonoscopy and Gastroscopy procedures, when you let us match you with the availability of our 19 experienced Specialists.

With a focus not just on reduced wait times, but also on providing exceptional endoscopy care - a valid

question might be, “is a Colonoscopy, just a Colonoscopy anywhere?”. At Waitemata Endoscopy, we regularly undertake audits of our Colonoscopy quality against international standards for every Endoscopist in our Group. Against key performance indicators for clinical quality including polyp detection rates (for abnormal growths), our results consistently exceed these benchmarks by 10–15%. So, the decision is yours, in terms of who you would prefer to perform your Colonoscopy if you have to have this procedure ideally just once!

Just as important as clinical quality, the quality of our patients' experience of our care also matters to us. From the results of our most recent patient survey, over 99% of responses said that they would recommend us to their family and friends if they needed an endoscopy, which reflects our dedication to excellence and passion for what we do.

From our bookings team, to our endoscopy nurses, and experienced team of Gastroenterologists and Surgeons, our team is passionate about supporting you through each stage of your endoscopy procedure with empathy and professionalism. So, take action for your health, and let us help you 'get to the guts of it' within 7 working days for your peace of mind.

To take a video tour of our Clinics and the patient journey, head to our website at www.waitemataendoscopy.co.nz/locations of what to expect at

www.waitemataendoscopy.co.nz/locations

Ngā manaakitanga (best wishes).

Sarah McNamara Quality Coordinator, Waitemata
Endoscopy



are dedicated
to exceptional
patient care

With increased capacity, Waitemata Endoscopy is able to offer timelier access to a group of experienced Gastroenterologists and Surgeons

Appointments are available *within 7 working days* for most Colonoscopy & Gastroscopy procedures by matching you with the availability of our experienced Specialists*

Talk to your GP about a referral to the Waitemata Endoscopy Group, or you can self-refer at:

www.waitemataendoscopy.co.nz/referrals

WE have you covered from 'Top to Bottom'



WAITEMATA
ENDOSCOPY



a joint venture with
**Southern Cross
Healthcare**





*Scan to find out more or
call us on (09) 925 4449

URGENT APPOINTMENTS AVAILABLE



Food & Beverage

'Tis (almost) the Season at The Riverhead

It might still be a few months away, but Christmas has a way of sneaking up on us. One minute you're enjoying short winter evenings, and the next you're knee-deep in tinsel, humming along to Mariah Carey, and wondering how the year flew by so fast. That's why now is the perfect time to get those festive plans sorted - before the December rush begins.

The Riverhead is a gem of a venue for end-of-year celebrations. Overlooking the water, with a mix of indoor and outdoor spaces, it offers a relaxed country feel. Whether it's an intimate team lunch, a lively evening with colleagues, or a client thank-you event, the options are flexible. The Boat House can be hired privately for larger gatherings or shared with other smaller groups for a more casual vibe. On-site

catering, riverside views, and even the option to arrive by ferry (tide-dependent) make it a memorable spot for work parties and festive get-togethers alike.

Of course, Christmas Day itself is something special at The Riverhead. Skip the stress of cooking - and cleaning - and let their team handle it. The Landing Restaurant offers a peaceful, 3 course degustation menu at \$130 per person. The Boat House, where the festive spirit runs high - suits the whole family and the buffet is back by popular demand - this year with the addition of a children's buffet.

From shared platters and seated menus to live music and custom cocktails, The Riverhead delivers an effortless mix of good food, good company, and a dash of holiday magic. Just don't leave booking too late - after all, Christmas may be months away, but those coveted tables won't stay empty for long.



Christmas
at The Riverhead

Book your
Christmas Function or
Christmas Day Lunch
Ph: 412-8902

RIVERHEAD
1857
New Zealand's Oldest
Riverside Tavern

www.theriverhead.co.nz

**GOOD!
FROM
Scratch**

Michael Van de Elzen's farm based cookery school.
Hosting hands on cooking classes, private dinners
and events.

378 Taiapa road, Muriwai, New Zealand
www.goodfromscratch.co.nz
09 411 8808
info@goodfromscratch.co.nz

Everything you need to know about property

Property

Hub

**Mitre10 MEGA
Westgate**

Property Hub

What's inside

19
24
30
41

Property News
Property Statistics
Property Market
Home & Garden



ENQUIRIES / FEEDBACK / ADVERTISING:
E editorial@kumeucourier.co.nz
W Property-hub.nz

COVER PHOTO: Mitre10 Mega Westgate
PRINT RUN: 25,000 copies, Treehouse Print

Property News

19

Upgrade your kitchen in time for summer hosting



Summer in New Zealand is all about sunshine, great food, and time spent with friends and whānau. If you're planning on playing host this season, now is the perfect time to give your kitchen a refresh. Whether you're looking for a full renovation or just a few smart upgrades, the right improvements can make summer entertaining a breeze.

Start by thinking about functionality. A well-organised kitchen with plenty of bench space, clever storage, and the right appliances makes cooking for a crowd much easier. Consider upgrading to energy-efficient appliances that not only perform better but also help keep your power bills down over the busy holiday season.

Fresh surfaces can instantly modernise your kitchen. New benchtops, splashbacks, or cabinet handles can transform your space without the need for a complete overhaul. Lighting is another easy win—bright, well-placed lights make food prep easier and create an inviting atmosphere when the sun sets.

Don't forget the flow between your kitchen and outdoor areas. With summer weather calling everyone outside, creating a seamless connection between your kitchen and entertaining spaces means you can be part of the action while preparing food. Outdoor dining sets, BBQs, and stylish servingware can help make your place the go-to spot for gatherings.

From practical kitchen fittings to stylish finishing touches, Mitre 10 MEGA Westgate and Henderson have everything you need to get your home ready for summer entertaining. Whether it's a quick upgrade or a major transformation, you'll find the tools, materials, and inspiration to make your kitchen the heart of the season's celebrations.

Make this summer one to remember—starting in your kitchen.

Make the most of Interest rate cuts in your mortgage repayments

With interest rates trending down, many homeowners are asking: Should I reduce my repayments or keep them the same?

Let's unpack how to make the most of falling interest rates – whether you're coming off a higher fixed rate or considering a strategic refinance.

Do you maintain repayments and pay off your mortgage faster?

Reduce repayments and free up cashflow?

Maintaining the same repayment level despite lower interest rates, can help you pay your loan off faster, leading to substantial savings on interest costs over time. I can show you your potential savings very easily – you'll be amazed.


You will also be better positioned to weather future interest rate hikes, as a smaller loan balance means lower interest costs.

Break your current fixed rate and refix at a lower one?

If you have already locked in a higher rate, you might be wondering whether it's worth breaking this term to refix at one of the lower rates now available.

Before making a decision, it's important to talk to a Mortgage Adviser to perform a cost-benefit analysis, as breaking a fixed-term loan can incur a break fee which could negate any potential savings from switching to a lower rate. I can calculate whether the savings from the lower interest rate over the new fixed term would outweigh the break fee and any other associated costs that come along with it. Every option has pros and cons depending on your goals, cash flow, and long-term plans. That's where working with a Mortgage Adviser can give you the edge.

Let's Chat. Stephen Massey – Mortgage Adviser and Re-Fix Specialist, Call or Text 021 711 444.



Loan Market
Stephen Massey
Mortgage Adviser
stephen.massey@loanmarket.co.nz
021 711 444
Let's chat.

September property market report



Owners are becoming realistic that house prices are not bouncing back to 2021 levels.

The latest figures from Trade Me Property suggest people selling their homes appear to be becoming more realistic in their price expectations.

The national average asking price of residential properties advertised on Trade Me Property was \$821,750 in July, down by 1% compared to June.

In the greater Auckland market the average asking price dropped below \$1 million for the first time since September last year to \$989,250 in July.

That's down by \$17,000 (-1.7%) compared to June and the average Auckland asking price has now declined by \$68,050 since March.

There is often a dip in prices over winter, however this year's dip in Auckland's asking prices could be more prolonged than in previous years.

This dip has occurred earlier than last year, suggesting that we may see a more prolonged period of prices below the \$1 million threshold in 2025,

In selected areas in the North West the biggest price decrease has been felt in townhouse developments where the lack of parking and garaging, the cost of body corporate or laneway fees push up the operating costs of a property forcing buyers to consider the purchase price and the monthly costs as part of the decision.

Properties that are independent and unique are still holding good value and attracting buyer engagement

Call me, Graham McIntyre AREINZ directly

0800 900 700, via text at 027 632 0421, or email at graham.mcintyre@kumeu.rh.co.nz. Country Living Realty Ltd, t/a Raine & Horne Kumeu-Hobsonville Licensed REAA (2008)



Raine & Horne

Graham McIntyre
Licensed Agent
Kumeu | Hobsonville



rh.co.nz

027 632 0421
graham.mcintyre@kumeu.rh.co.nz

Raine & Horne New Zealand PTY Ltd Licensed REAA(2008)

Thinking about a retirement village?

By Kristin Sumpter, Lawyer at ClearStone Legal

When thinking about moving into a retirement village, try to visit several villages before deciding. Talk to existing residents if possible, and involve your family if you can. Buying into a retirement village is quite a different concept from purchasing a house. Some things to think about include:

1. You are buying the right to occupy a unit and won't have a title to any land, nor receive any capital gain when you leave.
2. You may need to adapt your existing lifestyle to a more communal one with less privacy, and restrictions and rules that apply.
3. Are pets allowed?
4. How long can guests stay?
5. Is the carparking convenient for you and guests?
6. How far away are the community facilities from your unit and how easy will access be if your state of mobility changes?
7. What services and facilities are offered, and are there existing care facilities available if your health needs change?

The next step is to complete an Application for an Occupation Right Agreement (ORA) with the village and pay a small deposit to hold the unit of your choice. The Application covers the key financial terms of your ORA and any conditions needed, such as for the sale of your home.

Your Application and ORA documents will then be sent to your lawyer to review and you are required to get your own legal advice before signing the ORA. This involves meeting with your lawyer to discuss the ORA.

After signing the ORA you still have a period to change your mind for any reason and get your deposit back. Your lawyer can assist you with this and with any conditions as they are due. They can also assist with the sale of your home and completion of the ORA purchase.

You are required to have Enduring Powers of Attorney and a valid will in place before entering a village so you will also have to complete these with your lawyer if needed.



Call now to discuss your legal needs

Kumeu Office
1A Tapu Road, Kumeu

Te Atatu Office
1/547 Te Atatu Road
Te Atatu Peninsula

p: 09 973 5102
w: cslegal.co.nz

As a tenant or a landlord, you need to get an annual rental appraisal?



If you own the property, or yourent a property, a rental appraisal will ensure that you understand the weekly rent, this ensures that the rent is fair, reasonable and market calibrated.

Your specialist team at West Auckland Property Management have a depth of real time information and advice in your area, and can provide reference properties and comparable details to evidence fair rent value.

If you are considering what, or where to buy, a rental appraisal can be extremely valuable! Knowing the returns you might be able to get for a particular property can help you compare it to others you might be looking at.

And if you're looking to obtain finance to buy an untenanted property, then an up-to-date rental appraisal will assist in your conversation with the bank, in the absence of a signed tenancy agreement.

At West Auckland Property Management our rental appraisals are fast to generate and free of cost.

When should you get a rental appraisal?

The rental market changes fast. Changes can be seen in rentals available and the rent achieved for them. Extra's that add significant value include garaging, off street parking, multiple bathrooms, backyards and cul-de-sac locations.

When you are considering the rent, all factors that affect the performance and enjoyability of the property make an impression on the fair rent achieved.

Why use a Property Manager, rather than a D.I.Y approach.

A property manager provides a structured approach to your asset and your investment return. It provides confidence if any issues go to Tenancy Tribunal. And it

delivers a program of work that manages and monitors water use, rates, regular rent reviews. Your insurance company will favour a professional Property Manager managing your asset which provides a structured and regular inspection program to ensure confidence in the asset.

Added value.

At West Auckland Property Management we consider the best yield over the best term. This ensures Tenants achieve security of tenure and Owners get security of income. This provides a win-win solution while also minimising cost of service to the Owners of loss of rent and cost of re-Tenancing. A healthy homes standard audit and updates also ensures benefit to the Owner and the Tenant.

To learn more about the value delivered to you from West Auckland Property Management call Graham McIntyre today on 0276 320 421 or email graham@wapm.co.nz



Residential rental property advice that's timely, accurate, and measured, to ensure your property gets the attention required. It's a process that builds on 25 years of success and succession.

PHONE: **09 832 0832**
www.wapm.co.nz

West Auckland Property Management




CONVEYANCING - SALE or PURCHASE FROM
\$899 plus GST & disbursements Call now **022 1077 800**
office@landlawnz.com www.landlawnz.com

Personalised Property Management Solutions

Residential rental property advice that's timely, accurate, and measured, to ensure your property gets the attention required. It's a process that builds on 25 years of success and succession.

Ph 09 832 0832



Buying property? Don't waive your rights

When you buy and sell property, there is a standard agreement for Sale and Purchase which is produced by the Law Association of New Zealand (TLANZ) and the Real Estate Institute of New Zealand (REINZ). In some cases, the standard clauses in the agreement are amended prior to having a purchaser sign. These clauses might waive the purchaser's requisition rights, allow for early release of deposits or otherwise change the usual sale-and-purchase process.

In the usual sale and purchase process, purchasers have a right to requisition the title, meaning that the purchaser can get out of the contract within a certain time - if for example there is an issue with the title making the property uninsurable. Waiving these rights means that the purchaser could be stuck buying a problematic property.

The usual process also requires the land agent to hold the purchaser's deposit for a minimum period. If issues arise with the purchase, the deposit can sometimes be returned. Allowing early release risks losing the deposit if the transaction does not proceed for some reason. This is particularly inappropriate when the deposit is made up of KiwiSaver funds, which must be returned to the purchaser's KiwiSaver fund if the transaction does not proceed. It is therefore recommended to seek legal advice before signing any sale-and-purchase agreement. Particularly if any of the standard clauses have been amended or if you are using KiwiSaver funds towards your purchase.

If you need legal advice about a real estate transaction,

KEMP BARRISTERS & SOLICITORS

your local team of legal experts

Property Law

Litigation

Family & Relationship Law

Wills & Estates

Commercial Law

Trust & Asset Protection

info@kempsolicitors.co.nz

09 412 6000

25 Orahia Road Kumeu

KEMP BARRISTERS & SOLICITORS LTD

K

or any other legal assistance, feel free to call Kemp Barristers & Solicitors on 09 412 6000 or send us an email at info@kempsolicitors.co.nz.

Brendon Hodge - Why I love living in the Northwest

I can say with confidence that I feel privileged to be now working from the Raine & Horne office at 327 Main Road, Huapai. I am very glad to have made the move and now be able to serve in the area I have loved living in for almost thirty years (I should have done this several years earlier). I have thoroughly enjoyed living in Huapai/Kumeu and Waimauku area with my family and know that my daughters and granddaughters loved their association and benefitted from there early years at Huapai School and Waimauku School for their education and the friends they have made here.

This brings me to a list of reasons why I will always prefer living in North West Auckland and look forward to the future enhancements.

1, Lifestyle Appeal

- Still has a Semi- rural charm with space ,privacy and green surroundings. Kumeu Showgrounds and Huapai domain. - Life style blocks, vineyards and hobby farms are common - ideal if you're after fresh air and elbow room. - Close to Muriwai Beach, the Waitakere Ranges, assorted restaurants, a good variety of local shops and healthy activities with gyms and personal workshops. Plus also has good access to Westgate shopping hub.

2, Strong Community & Schools

- Family- friendly suburbs with well rated schools - Community events, local farmers markets, and wineries support a connected small-town feel. - Low density zoning in parts, offering a quieter alternative to urban Auckland.

3, Long-term Growth Potential

- The area is part of Auckland Council's Future Urban zone and is set to undergo significant development, including: - A planned town center in Kumeu - Upgrades to roads, transport links, and schools.



Brendon Hodge

Licensed Sales Person

m 021 608 234

brendon.hodge@kumeu.rh.co.nz

327 Main Road, Kumeu, NZ 0810

Raine & Horne - Kumeu | Hobsonville Country Living Realty Ltd Licensed REAA (2008)

Raine&Horne.



- Population is growing fast - demand for amenities, housing and infrastructure will likely push prices up long term.

4, Lower Entry Point (Compared to Central/Inner West)

- You get more house and land for your money than inner suburbs like Grey Lynn or Mt Eden. - Median house prices in Kumeu are about \$1.145 million versus well over \$1.6 million in parts of Auckland.

5, Rental demand (if investing)

- Many families and professionals are priced out of central Auckland and looking for alternatives. - Steady rental yield (3.25%) and growing demands from tenants seeking more space.

6, Recent Infrastructure Commitments

- Road improvements and planning for rapid transit (even if slow moving) show long term intent. - Potential SH16 upgrades will ease pressure on current traffic issues.

Brendon Hodge Raine & Horne Kumeu - Hobsonville 327 Main Road, Kumeu

G.J. Gardner Homes Rodney West



At G.J. Gardner Homes Rodney West, we promise to make your new home building experience a pleasure. If you're not sure if building is for you, here's a few reasons that might just help. Have an idea on paper but not sure where to start? Our New Home Consultants and onsite architects can turn your sketch into reality and have it priced all in the space of a very short timeframe.

Have a tight timeframe? No problem - we have trades and suppliers ready to go. Our standard build times could have you in your new home within 8 to 10 months.

We project manage everything every step of the way and give you written assurances, regarding costs, workmanship, material guarantees, completion dates and other key issues. With over 23,000 homes amongst the GJ team and every one of these completed, you're in safe hands. With some beautiful sections ranging from residential sites to expansive rural blocks there are some fantastic sites ready and available. We can even help you find your special place, sort out finance and payment terms to make it as simple as possible.

Looking for inspiration? Why not pay a visit to our award winning Wake Road showhome in Coatesville is great for those larger rural blocks, recently winning the GJ Gardner International Display home of the year. View the showhome tours to get you started.

PRIVATE RESIDENCE

RESIDENTIAL PROPERTY MANAGEMENT

- Full management
- One off Letting
- Rental advisory and appraisals
- Locally based, service all of AKL

022 6933 545 | www.privateresidence.co.nz



Friendly Legal Experts

smith AND PARTNERS

- Property Law
- Business Law
- Employment Law
- Debt Collection

- Family Law
- Family Trusts
- Estates
- Wills

293 Lincoln Road

Henderson, Auckland

PH: 09 836 0939

smithpartners.co.nz



Henderson Reeves

creating smart legal solutions

Property • Disputes • Family • Wills

Taina Henderson 027 537 9222

Shelley Funnell 027 537 9221

Amie Wallwork 021 421 336

www.hendersonreeves.co.nz

VODANOVICH

LAW

SALES & PURCHASE OF REAL ESTATE

RELATIONSHIP PROPERTY | BUSINESS STRUCTURES

POWERS OF ATTORNEY | WILLS & TRUSTS

COMPANY & EMPLOYMENT LAW

PLEASE CONTACT IVAN

ivan@vlaw.co.nz 09 412 8000

4a Shamrock Drive Kumeu, Auckland

Area Property Stats

PROPERTY-HUB.NZ

Every month Raine & Horne Kumeu assembles a comprehensive spreadsheet of all the recent sales in the area that reviews the full range of Residential and Lifestyle transactions that have occurred. To receive the full summary simply email the word "full statistics" to office@kumeu.rh.co.nz. This service is free from cost.

SUBURB	STREET	CV	BED	FLOOR AREA m2	LAND AREA m2	SALE PRICE
Coatesville						
	Lynton Masters Lane	\$3700000	5	359	23000	\$2900000
	Coatesville Riverhead Highway		0	0	10300	\$1225000
	Coatesville-Riverhead Highway	\$5175000	5	376	10000	\$4600000
	Coatesville Riverhead Highway		0	0	10300	\$1030000
Helensville						
	Kawariki Road	\$1000000	4	155	505	\$1060000
	Awaroa Road	\$750000	3	87	651	\$731000
	Garfield Road	\$840000	3	96	1063	\$870000
	Pipitiwai Drive	\$1310000	3	190	8140	\$1121000
	Garfield Road	\$990000	5	158	562	\$880000
Hobsonville						
	Tahingamanu Road	\$1100000	4	147	83	\$1050000
	Kanuka Road	\$1455000	3	181	385	\$1180000
	Genevieve Lane	\$750000	2	76	0	\$628000
	Nugget Avenue	\$970000	3	109	171	\$897500
	Hendrika Court	\$1525000	5	259	552	\$1355000
	La Bella Road	\$1550000	5	266	300	\$1543000
	Hobsonville Point Road	\$1225000	4	175	0	\$1190000
	Rangihina Road	\$1150000	3	177	144	\$1080000
	Frank Gill Road	\$1105000	3	122	162	\$965000
	Autumn Blaze Street	\$1200000	3	183	172	\$1197000
	Poaka Road	\$1350000	4	226	237	\$1245500
	Nugget Avenue	\$930000	3	109	143	\$910000
	Glenae Lane	\$880000	2	108	124	\$828000
Huapai						
	Paihere Street	\$1325000	4	521	772	\$1222000
Ara Kakara Avenue						
		\$1200000	3	518	700	\$1180000
Kumeu						
	Reserva Crescent	\$120000	4	200	410	\$1150000
	Hanham Road	\$1625000	3	325	14300	\$1600000
	Dida Park Drive	\$650000	2	82	0	\$665000
	Jeroboam Loop	\$1350000	4	223	525	\$1237000
	Gilbransen Road	\$1350000	3	182	621	\$1270000
	Station Road	\$1075000	3	133	458	\$1050000
	Papa Orchard Drive	\$1225000	3	180	407	\$1100000
	Jeroboam Loop	\$1225000		163	0	\$1090000
	Riverhead Road	\$2050000	3	140	28800	\$2320000
	Lockyer Road	\$1350000	6	216	689	\$1278000
Massey						
	Arlette Place	\$710000	3	81	0	\$685000
	Donovan Avenue	\$780000	3	100	991	\$900000
	Tiriwa Drive	\$600000	2	77	85	\$590000
	Lanham Lane	\$930000	5	234	514	\$545000
	Katrina Place	\$830000	3	96	615	\$767000
	Cedar Heights Avenue	\$740000	3	104	374	\$400000
	Anich Road	\$1050000	5	247	933	\$1005000
	Doone Place	\$860000	3	90	705	\$818888
	Killygordon Place	\$810000	4	103	540	\$860000
	Gallony Avenue	\$860000	3	110	667	\$850000
	Tararua Street	\$1130000	4	198	450	\$1239000
	Landsdale Place	\$820000	3	90	0	\$720000
	Mudgeways Road	\$1575000	4	144	40500	\$1390000
	Darcy Place	\$910000	3	110	734	\$909000
	White Heron Drive	\$790000	2	150	0	\$765000
	Reynella Drive	\$295000	2	96	0	\$565000
	Red Hills Road	\$1580000	7	353	10000	\$1650000
Riverhead						
	Elliot Street	\$1760000	6	198	817	\$1520000
	Pitoitoi Drive	\$1450000	4	203	609	\$1340000
	Jessie Rise	\$1425000	4	202	661	\$1320000

25

SUBURB	STREET	CV	BED	FLOOR AREA m2	LAND AREA m2	SALE PRICE
	Wautaiti Drive	\$2250000	5	301	0	\$2050000
	Berenice Lane	\$1805000	0	0	20000	\$1750000
	Pohutukawa Parade	\$1625000	4	244	807	\$1745000
	Ridge Road	\$1501000	0	0	23900	\$720000
Waimauku						
	Solan Drive	\$1475000	4	256	1023	\$1550000
	Waikoukou Valley Road	\$2950000	4	178	202200	\$2400000
	Pukemarino Road	\$1200000	4	186	879	
						\$1190000
Waitakere						
	Amreins Road	\$1475000	2	130	11700	\$1660000
	Sunnyvale Road	\$1300000	3	208	3617	\$1430000
West Harbour						
	Kayle Glen	\$820000	3	100	398	\$760000
	Lagoon Way	\$900000	3	160	424	\$865000
	Wiseley Road	\$1050000	5	153	428	\$1195000
	Magdalen Place	\$820000	3	120	557	\$885000
	Buisson Glade	\$920000	4	130	193	\$920000
	Glucina Avenue	\$1300000	4	180	685	\$1300000
	Seacrest Drive	\$1360000	4	185	465	\$1235000
	Crosby Road	\$770000	2	105	91	\$730000
	Suncrest Drive	\$1325000	3	220	677	\$1335000
	Sumich Place	\$1200000	3	94	654	\$935000
	Crosby Road	\$1250000	3	90	849	\$820000
	Crosby Road	\$820000	3	102	91	\$744000
	Hobsonville Road	\$1300000	3	260	373	\$1255000
	Picasso Drive	\$1175000	4	162	156	\$1040000
Westgate						
	Berba Lane	\$950000	4	167	192	\$1032000
	Pukewhero Rise	\$790000	2	96	140	\$750000
	Henwood Road	\$1075000	5	185	248	\$1134000
	Tarapuka Road	\$910000	2	100	121	\$720000
	Greenbrier Street	\$990000	4	128	251	\$1010000
Whenuapai						
	Harewood Street	\$970000	3	102	137	\$835000
	Nils Andersen Road	\$900000	3	143	301	\$940000
	Camp X Place	\$1250000	4	235	315	\$1235880

DISCLAIMER: These sales figures have been provided by a third party and although all care is taken to ensure the information is accurate some figures could have been mis-interpreted on compilation. Furthermore these figures are recent sales over the past 30 days from all agents in the area.

Raine & Horne's commission rate:

2.95% upto \$590,000

(Not 4% that others may charge)

1.95% on the balance

Plus \$490 admin fee.

All fees and commissions + GST

Raine & Horne Kumeu also provide statistical data FREE from cost to purchasers and sellers wanting more information to make an informed decision. Phone me today for a FREE summary of a property and surrounding sales, at no cost and no questions asked. Graham McIntyre 027 632 0421 * Available for a limited time. Conditions apply.

Raine&Horne®

This page is sponsored by Raine & Horne Kumeu - Hobsonville
Phone 0800 900 700 Country Living Realty Ltd Licensed REAA (2008)

Graham McIntyre
Brand & Territory Owner
027 632 0421



OCR Cut & Market Wrap

The Reserve Bank has cut the Official Cash Rate by 0.25% to 3% and signalled more reductions ahead, with the OCR expected to reach 2.5% by March 2026.

What does this mean for you?

- If you're on floating rates, banks have already begun cuts, with some trimming floating rates within hours of the announcement.
- If you're on a fixed rate, wholesale swap rates are easing too. These are the international funding markets (largely US-based) where NZ banks source money. When swap rates drop, banks borrowing costs fall, giving them more margin to pass onto Kiwi borrowers in the form of lower fixed interest rates.

We have seen some movement on the short term fixed rates in the lead up to the OCR, many banks pricing in the cut ahead of time.

Market outlook:

The property market remains subdued, regional areas are showing more activity and increased buyer enquiry. The Cotality Home Value Index recorded a 0.2% fall in July, taking the national median value to \$819,921.

For the full monthly breakdown, head to our blog for the latest Cotality Property Insight

Opportunities for borrowers:

- Refix strategy: Shorter-term fixes could leave you better placed as rates continue to fall over the next year.
- Restructuring lending: Lower rates can also free up cash flow or help you repay debt faster.
- First Home Buyers: Many using the current market to take their first step.
- Investors Returning: Falling servicing rates and improved cash flow are encouraging investors back, although many are hunting for the right deal.

Now's the time to review your mortgage - whether you're refixing, restructuring, or planning your next purchase. Get in touch and let's make sure you're positioned to benefit.



Ben Konings
Your Local Mortgage Adviser
0204 1122 481

Your Partner In Property And Finance

Call Ben for personalised mortgage advice to help you achieve your property and financial goals!

• First Home Buyers

• Upsizing & Downsizing

• Property Investors

• Repayment Strategies

Scan Me

Ben Konings
Your Local Mortgage Adviser

0204 1122 481

ben@mortgagesupply.co.nz

www.mortgagesupply.co.nz

THE Mortgage SUPPLY CO. NEW ZEALAND

Ben Konings gives financial advice through Fearless Financial Limited trading as The Mortgage Supply Co.

Spring Into Stress-Free Property Management this September!

Let us handle the details, so you can enjoy the season!

As everything starts to bloom, it's the perfect time to refresh your property management strategy. Whether you're a landlord looking for reliable tenants or a homeowner needing expert oversight, we're here to help your investment thrive.

With our team by your side, your property will be in full bloom—just like your peace of mind. 🌸

Call or email us today to find more

09 832 0832 office@wapm.co.nz

West Auckland Property Management



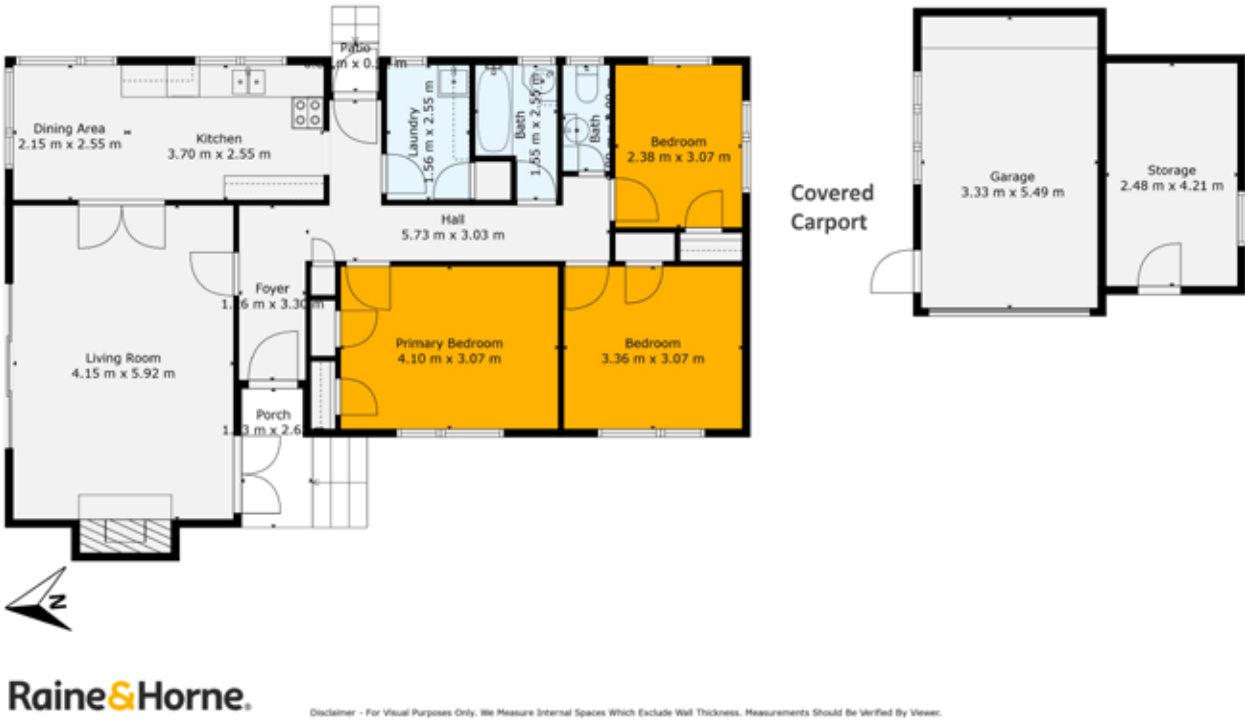
Charming Three Bedroom Brick and Tile Home

27 View Road, Henderson

We are pleased to bring to the market this solidly built 1960's one level three-bedroom brick and tile freehold home of 105m2 approx on a 757m2 approx section close to Henderson Central. This lovely brick home was built in the days when they knew how to build houses to last and it still holds its original charm. The house has been recently refreshed with new floor coverings and

repainted internally throughout, and the original wooden joinery has been replaced with aluminium joinery. There is onsite an external one car garage and a carport for another car plus parking for one or two more vehicles. There is also a good-sized storage shed to house your extra outdoor utilities or sports equipment. You will also find the front lawn has space to spread out an/ or continue to further the surrounding garden to your requirements.

27 View Road Henderson



- Featuring:
- 3 bedrooms
 - 1 bathrooms
 - 1 dining
 - 1 living
 - 1 garage, 1 carport & 2 open spaces
 - Land area 757 sqm
 - Floor area 105 sqm
 - Brick & Tile freehold home
 - Price by negotiation



For more information on this property call:
Brendon Hodge on **021 608 234**
or email: **brendon.hodge@kumeu.rh.co.nz**
Country Living Realty Limited T/A Raine and Horne Kumeu
- Hobsonville. Licensed REAA (2008).



Quintessential Kiwi Dream - Cottage on ¼ acre

802 Waitakere Road, Kumeu

In a rural setting, surrounded by equine and viticulture, in a sun-bathed north west position is this beautifully presented 3 bedroom home. Offering open plan living with renovated kitchen, breakfast bar and lounge with separation to generous bedrooms and bathroom. It's beautiful in it's presentation and it's simplicity, delivering easy living, rural vista's and privacy. The land is flat and wire and baton fenced, providing options to overlay pet fencing should you wish. A planted frontage provides additional privacy from the road, with simple access to good off-street parking. A 25,000 litre water tank and

rural septic system ensures you are out of the clutches of watercare services, ensuring your water and waste is cost effective and self managed. The home is positioned to the front of the 1038sqm section allowing for an expansive lawn playground for the children and pets. Set a short distance from Kumeu and Taupaki, this is a rare opportunity to purchase a truly residential home on flat land, within a truly rural environment.

Graham McIntyre on 027 632 0421
or email: Graham.mcintyre@kumeu.rh.co.nz
Country Living Realty Limited T/A Raine and Horne Kumeu - Hobsonville. Licensed REAA (2008).





- Featuring:
- 3 bedrooms
 - 1 bathrooms
 - Land area 1038 sqm
 - Floor area 110 sqm
 - North west position
 - Plenty of parking
 - Expansive lawn area for kids & pets
 - Close to Kumeu & Taupaki

A modern kitchen and dining area. In the foreground, a dark grey dining table is set with green ceramic dishes and glasses. A large vase with dried flowers sits on the table. In the background, a kitchen island with a white countertop and a black sink is visible. The kitchen cabinets are a mix of light wood and dark grey. A large window on the left side of the image shows a view of the outdoors.

NOW'S A GREAT TIME TO BUILD



**We can make your
new home unique
to you!**

Now's a great time to build,
so make sure you're putting
yourself in the safest hands
by choosing the right builder
with a proven track record.

GJ's has built almost 23,000 homes
throughout NZ for over 25 years, with every
home completed. It's just one of the reasons
they are New Zealand's Most Trusted Home
Builder year after year.

So whatever you're looking for, bring us
your ideas and we'll work with you to create
a home that fits you and your lifestyle.

So make the wise choice and call your local
GJ's team today.

0800 42 45 46 / gjgardner.co.nz

G.J. Gardner. HOMES



Near new build

58 Turret Lane, Hobsonville

The perfect blend of indoor-outdoor flow with all the comforts of a high spec build.

Don't be fooled, it's bigger than it looks offering uncompromised open plan kitchen, dining, lounge alfresco with easy double stack slider opening to decking and storage shed.

Upstairs, two toilets, full bathroom and two generous bedrooms.

Exceptional build, earthy tones, carpet, tile and natural wood laminate, this home has been crafted and coloured to provide a seamless buy-move-in experience.

Motivate Vendors graduating North.

For more information on this property call:

Graham McIntyre on **027 632 0421**
or email: **Graham.mcintyre@kumeu.rh.co.nz**
Country Living Realty Limited T/A Raine and Horne Kumeu - Hobsonville. Licensed REAA (2008).



- Featuring:
- 2 bedrooms
 - 1 bathrooms & 2 toilets
 - 1 living rooms
 - Floor area 84 sqm
 - Land area 99 sqm
 - Located near Bomb point
 - Close to Hobsonville Point coastal walkway
 - Catalina Bay farmers market & Hobsonville point Ferry Terminal approx. 8 mins drive



1064 Coatesville Riverhead Highway

A rare opportunity for owner occupiers or investors to purchase high quality retail units in the heart of the rapidly growing Riverhead area. These units are situated along the busy Coatesville Riverhead Highway. The development was constructed in 2022 and has not yet been occupied. The units are presented in an 'as new' condition and are situated beneath apartments with a large number of new homes immediately behind. With six units on offer, all on their own unit title, there are various sizes available from 28 sqm to 126.30sqm (approx). In addition to the street parking directly outside the development, each unit has its own designated carpark, provided as auxiliary units on each title. There are Body Corporate Rules in place to maintain the high standard of the development. The units are presented as bare shells ready for the new owners to fit out to suit. Deadline for offers at 4pm on 10th September 2025. Buy one or more.

Call the brokers now to arrange a viewing.



Caroline Cornish
Director | Investment Sales
+64 21 390 759



Benson Tarm
Broker | Investment Sales
+64 21 536 861



David Burley
Director | Investment Sales
+64 21 478 225



Home & Garden

Pole Yard



Nestled at 82 Foundry Road in Silverdale, Pole Yard Ltd has built a trusted reputation over the past 25 years as one of Auckland's leading suppliers of structural SED poles and outdoor timber products.

Our roots go back to the early days of Pole Specialists, a construction company—still operating today—specialising in retaining walls, piling, and foundations. To support those projects, our owner purchased the Silverdale yard many years ago. After seeing how much demand there was for quality materials, the decision was made to open the yard to the public in 1999, and Pole Yard Ltd was born—running alongside the construction business ever since.

Alongside our signature SED poles, we stock SG8 square posts, a small but well-selected range of fencing supplies (including wire, posts, and staples), and a variety of landscaping timber products. From SED poles, timber railing, and decking boards to drain coils, multicrete, nails, and plywood – if it's for your outdoor project, chances are you'll find it here.

Our commitment to delivering top-quality products has always been our focus. We supply our products to

everyone—including contractors, tradies, merchants, and the general public. Over the years, we've built strong, long-standing relationships by being reliable, consistent, and genuinely helpful – and we're continuously working to keep it that way.

Getting what you need is simple. You can collect your order directly from our Silverdale yard or have it delivered with our own tip trucks, with trusted Hi-ab partners on hand for heavier loads.

So, whether you're tackling a major construction project, putting up a fence, or working on a small build at home, you can count on Pole Yard Ltd to help you get the job done – and done right.



OUR PRODUCTS:

— Structural SED Poles	— Rural fencing products
— Outdoor Timber	— Pony Jump Poles
— Square Posts	— Collection and Delivery available

sales@poleyard.co.nz
09 426 5035

www.poleyard.co.nz
82 Foundry Road, Silverdale

OUR SERVICES:

— RETAINING WALLS	Pole Specs delivers an all-encompassing array of services and expertise in this specialised field.
— SLIP REPAIRS	
— FOUNDATIONS	
— PILING	

dan@polespecs.co.nz
09 426 5035

www.polespecs.co.nz
82 Foundry Road, Silverdale



165 reviews and an average rating of 4.65 stars – thanks to you



When you run a business, what the customer thinks of you and the service you provide means everything. It leads to repeat business, loyal relationships and valuable word of mouth. As such,

we're stoked to share that HydroVac has now received 165 online reviews, with an average rating of 4.65 stars!

This level of trust and recognition means the world to us – and we know it all comes down to our incredible customers and dedicated team.

To our valued customers: Thank you for taking the time to share your experience with HydroVac. Whether it's septic services, stormwater cleaning, CCTV inspections, or spill response, your feedback helps us refine our services and stay ahead in delivering excellence. Every review helps us to know whether we're on the right track.

To our team: To our amazing operators, admin, and support crew – this is your success. Our days aren't always easy, but you continue to show up and demonstrate hard work, professionalism, and genuine care for each job and customer – and those 165 reviews prove it.



OUR PROFESSIONAL TEAM IS HAPPY TO HELP WITH:

- Septic tank inspections, empties and cleans
- Wastewater system maintenance and disposal
- Grease trap cleaning

We can help you ensure you comply with Auckland Council Healthy Waters requirements and the relevant paperwork.

We are proudly NZ-owned with a friendly team who truly care about doing a good job for you.

0800 493 768
www.hydrovac.co.nz



What this means... With a 4.65 stars average, our clients consistently rate us among the best.

Reviews often mention us as reliable, efficient, and environmentally responsible. There's also lots of kind comments name-checking members of our team and their professionalism and personal service, which we pride ourselves on.

Thank you, from all of us at HydroVac, for taking the time to share your experience and feedback with us. Your comments motivate us all!

If we can help you with any septic tank inspection or empty, drain unblock, stormwater, emergency spill or hydroexcavation, please don't hesitate to call our friendly local team: 0800 493 768 or email service@hydrovac.co.nz. www.hydrovac.co.nz

Spring's here after a soggy winter – Time to freshen up the house



After what's felt like one of the wettest winters in years, spring has finally arrived. The days are getting longer, the sun's a bit warmer, and it's a great time to get those outdoor jobs ticked off – especially if your place could do with a fresh coat of paint.

Exterior painting works best when the weather's settled, and after months of rain delays, painters are already starting to book up. If you're thinking about it, best to get in early before the summer rush hits.

We're locals who specialise in giving homes a top-quality finish that lasts. Whether it's a full repaint or just touching up those weather-beaten spots, we've got the gear, the

HOUSE PAINTING

INTERIOR / EXTERIOR / ROOF

FREE QUOTE &
3 YEAR WARRANTY*

*Conditions Apply



Brad 021 756 890
focusonpainting@gmail.com
[facebook.com/focusonpainting](https://www.facebook.com/focusonpainting)

know-how, and the right paint for our Kiwi climate.

You can see their work and read reviews from happy customers at [facebook.com/focusonpainting](https://www.facebook.com/focusonpainting).

Free quotes are available. To get started, call or text Brad on 021 756 890 or email focusonpainting@gmail.com.

Whenuapai Floral & Garden Circle

We will be back on Thursday 11th September after our winter recess. There are trips planned to beautiful gardens and there are some interesting speakers lined up. We are waiting to see your best blooms and best garden produce and hear about your successes and failures. Do come along and share a couple of hours with fellow enthusiastic gardeners.

Daffodils have been showing their bright heads for a few weeks now and magnolias are already in bloom so while the nights are still cold, warm days are ahead as spring shows off with all its frills and fragrant floral power.

By the time you read this our gardens should be springing into new life and we will resume our Garden Club meetings on Thursday 11th September. I do hope the winter break has recharged your batteries and you are raring to go and learn new things. To that end, our Guest Speaker will be Paul Dine, Beekeeper, the same occupation as our famous Sir Ed, just in case that pops up in any quiz or crossword you may be doing.

The benefits of bees in the garden include pollination, increased yields and biodiversity, they are non-damaging and nutrient cycling. Bees are essential for cross-pollination, which helps flowers produce more seeds and increases the growth of plants. Having bees in your garden can significantly boost the yields of fruits and vegetables.

Bees contribute to a diverse ecosystem by supporting the growth of various plants, which in turn attracts other beneficial insects. Bees do not harm plants; instead, they enhance the visual appeal of gardens by promoting healthy blooms.

By pollinating plants, bees help maintain the nutrient cycle in the garden, leading to healthier soil and plants. In fact bees are the unsung heroes in our gardens.

Should you like to know more about our Club, and/or wish to join us, please phone Judy Garrity on 8335592. Meetings are held at 1 p.m. at 41 Waimarie Road, Whenuapai Village, on the second Thursday of the month with trips usually on the fourth Thursday. Entry fee is \$4 with another dollar for a raffle ticket.

To quote from one of my colourful bookmarks, "Bee kind and loving to each other" (originally from the Bible)

Until next time,

Happy Gardening from Mary Anne Clark

ANYTIME PEST CONTROL
FLIES, ANTS, COCKROACHES, FLEAS
RATS, MICE, SPIDERS, WASPS ETC.
WEEDSPRAYING
KEVIN MORRIS REGISTERED TECHNICIAN
PHONE: 09 411 7400 MOBILE: 027 277 7143

Andrew Shone.
Carpentry & Building Services.
Small alterations , Fencing , Decking & General Building repairs.
Free quotes
Ph 021 999 542 or 412 6213
Email shonebuilder@extra.co.nz

SERVICE CENTRE
EOIN STUART
Phone 09 412 5900 | Mob 022 639 0274
338 Main Road Huapai - Kumeu, Auckland 0810
autoworxnz@outlook.com

wallerprojects
MARK WALLER
M: 021 802 845
E: mark@wallerprojects.co.nz
A: The Hangar, Catalina Bay, 2/2 Boundary Road, Hobsonville Point
W: wallerprojects.co.nz
AWARD WINNING DESIGN & BUILD

Spring cleaning time

Waterblasting with STIHL SHOP Kumeu & Westgate

Waterblasting is one of the fastest and most effective ways to clean outdoor areas such as your deck, driveway or house. They are also great to wash down a muddy mountain bike, or to clean your outdoor furniture. Cleaning with a waterblaster instead of a hose can also reduce water consumption (and it does a better job!)

Size - As is the case for all outdoor gardening power tools, bigger is not always better. This is important for waterblasters and pressure washers because, for example, using too much pressure on something like wood, stucco or plaster can cause damage to the surface.

Work - Smaller size models are more suited to general property maintenance such as washing down your muddy mountain bike, car or deck. If you are looking at washing down your house, concrete floors, or even unblocking drains, you should consider a medium size model. Larger models are great for heavy-duty jobs such as cleaning large machines, long driveways, or even cleaning professionally.

How often - Home users generally use their waterblasters 6-12 times a year to complete small cleaning jobs, if this is the case an entry level model is all you need. If you use your machine more often it might be a good idea to invest more to gain extra features and convenience as well as greater PSI and water flow.

Power source - If you have easy access to power supply and can finish your cleaning job without having to move around too much, a quiet, compact electric waterblaster could be the right choice. In comparison battery and petrol powered machines will go anywhere, with petrol offering higher pressure, flow and durability. All that is required with a petrol waterblaster is a reliable water supply. Alternatively, you can use water from a bucket to run STIHL's new battery models.

Nozzles & accessories - STIHL's waterblasters come with a selection of nozzles, like a fan jet nozzle to cover larger areas more quickly or a rotary nozzle to concentrate



CLEAN ANYTHING, ANYWHERE WITH A STIHL WATERBLASTER!

54 Main Rd
Kumeu
PH: 412 8592
OPEN MON-SAT

**AT TWO HANDY LOCATIONS
FOR EXPERT ADVICE & SERVICE**

15 Kakano Rd
Westgate
PH: 930 9999
OPEN 7 DAYS

power on tough dirt. There are also a range of brushes for cleaning delicate surfaces and patio cleaners for cleaning large flat surfaces quickly and more efficiently.

To find out more about STIHL's waterblaster range, come visit us today.

Our Kumeu store is open Monday-Saturday and our Westgate store is OPEN 7 DAYS for all your outdoor power equipment (and waterblasting!) needs.

Waimaku Garden Club

We haven't let the rain over the last two months dampen our spirits. Last month we had our annual mid winter Christmas lunch celebration. Our venue was The Brigham Cafe set on 3 acres of sprawling gardens. We were served a delicious traditional Christmas lunch of succulent ham and lamb with all the trimmings. We also had an inspiring presentation from Jasmine Franklin on why the Monarch Butterfly is endangered and what we can do to help with that. Her passion for the Monarch is contagious. Last Thursday was another wet day ideal for our yearly movie trip. We boarded our luxury coach and ventured to the Bridgeway Boutique Theatre in Northcote. We were welcomed with morning tea before enjoying an inspiring drama set in Ireland called Tarrac. Following that we headed up the road to the Historical Northcote Hotel to have a sumptuous lunch in a cosy atmosphere. We had a quick trip home on the bus lane to end our lovely day.

Feel free to contact any of us: Ann(0210357406), Diana (0274788928), Gail (021344070), Maree (0274963006), Moira(0274989154), Sandi (0273184514).



QUALITY WATER

SUPPLIES

7 DAYS PHONE NOW!

Bev & Andrew Speedy

Registered by Ministry of Health & Auckland Council

Fresh Water Supplies

Ph. **411.8116** Txt **027.345.3805**



EARTH MOVING CONTRACTOR

BOLER

CONSTRUCTION LTD

Driveways, All Drainage, Site Cuts, Property Maintenance, Subdivisions, Horse Arenas, Footings & Drilling, All earth work requirements, Laser Equipped.

Steve PH 0274 971 154 A/H : 411 7177 E: bolerconstruction@xtra.co.nz www.bolerconstruction.co.nz Reg Drainlayer: Over 20 yrs Experience

Spring into Planting Season!

Zealandia

Growfresh 6pk Vegetables



3 for \$13
Assorted SKU's normally \$4.59ea

Morton Smith-Dawe

Seed Potato Varieties



Assorted SKU's \$16⁹⁸

McGregors

Seed Packets



Assorted SKUs from \$3³⁹

Tui

Quash Slug Control



SKU: 366964 \$8¹⁹

Dave's

Magic Mix 8kg



SKU: 2032133 \$19⁹⁸

Yates

Thrive Blood & Bone 3kg



SKU: 294834 \$16⁹⁸

Tui

Vegetable Mix 40L



SKU: 142734 \$16³⁹

Yates

Seed Raising Mix 5L



SKU: 139012 \$7⁹⁸

Tui

Compost 40L



SKU: 141806 \$10⁹⁸

Big Range,
Low Price,
Local Advice.

Mitre 10 MEGA Westgate & Henderson
Northside Drive & Lincoln Road
Monday to Sunday 7am to 6pm

@MEGAHenderson
@megawestgate
@mitre10.mega.henderson

MITRE 10
MEGA

WESTGATE &
HENDERSON

Winter woes? We're here to help



Winter in Auckland is well and truly here, and with it comes heavy rain, cold mornings, and unfortunately, some unwelcome surprises around the home or business.

From blocked drains and leaking roofs to plumbing and drainage issues, this time of year tends to

reveal problems that might have been brewing quietly through the drier months.

At Laser Plumbing & Roofing Whenuapai, we've seen it all – and we're ready to help you tackle those winter problems head-on.

Common winter issues we're seeing:

Blocked drains

Rain, leaves, and debris can easily clog your drainage systems, causing water to back up and create flooding around your property.

Roof leaks

That minor drip can quickly become a major headache. Whether it's failed flashing, or general wear and tear, our roofing team can pinpoint the problem and fix it, saving you the stress.

Plumbing problems

Cold weather can put stress on older pipes, seals, and joints, leading to leaks, bursts, or reduced water pressure just when you need it most.



Plumbing & Roofing
Laser
Whenuapai

- ✓ Plumbing Maintenance & Servicing
- ✓ Complete Roofing Services
- ✓ Renovations Plumbing
- ✓ Drainage Projects & Maintenance
- ✓ Gas Fitting & Maintenance
- ✓ New Builds Plumbing
- ✓ Backflow Testing
- ✓ 24/7 Emergency Plumbers

Proudly providing reliable, affordable plumbing, roofing and drainage services to our community for over 40 years!

CONTACT US ▶

 09 417 0110  whenuapai@laserplumbing.co.nz

Why call Laser Plumbing & Roofing Whenuapai?

- Local Experts who understand how winter affects Auckland homes and buildings
- Qualified Plumbers, Drainlayers and Roofing Specialists under one roof
- Fast, reliable service with clear communication and upfront pricing
- Community Focused Business this month, we were proud to support our local Whenuapai Senior Campus School by providing sausages for their cross-country fundraiser.

Don't wait until it gets worse

Whether it's a slow-draining sink, water pooling on your roof, or a full-blown leak, acting early can save you thousands in damage and repairs.

Need help this winter? Call Laser Plumbing & Roofing Whenuapai today on 09 417 0110 and we'll get it sorted for you.





Burnetts

SEPTIC & WATER TANK CLEANING

YOUR SEPTIC TANK SHOULD BE CLEANED EVERY 3 YEARS (AVERAGE FAMILY OF 4)

WE SERVICE ALL AREAS

PROMPT, PROFESSIONAL SERVICE WITH 30 YEARS EXPERIENCE

PHONE: 09 412 9210 OR 027 492 4494



Spring into food planting – Grow your own freshness

There's nothing quite like stepping into your garden and picking fresh, homegrown produce for the table. As the days get longer and the soil warms, spring is the perfect time to get planting and set yourself up for a season of fresh flavours and rewarding harvests.

Start with the essentials – tomatoes, lettuce, beans, cucumbers, and courgettes thrive in spring's mild temperatures and longer daylight hours. Herbs like basil, parsley, coriander, and mint also grow beautifully now, adding bursts of flavour to your cooking. For root crops, try beetroot, carrots, and radishes – they're quick to grow and add vibrant colour to meals.

When planning your planting, consider both variety and succession. Staggering your sowing every few weeks will ensure a continuous supply rather than a single glut. Companion planting is another great trick – marigolds, for example, deter pests and look cheerful alongside your vegetables.


Healthy plants start with healthy soil. Enrich your garden beds with compost or organic fertiliser before planting to boost nutrient levels and encourage strong growth. For smaller spaces, raised garden beds, vertical planters, or even large pots can be surprisingly productive.

Spring can still bring the odd cool night, so keep frost

cloth on hand for tender seedlings. Regular watering, mulching to retain soil moisture, and keeping on top of weeds will help your garden thrive.

At Mitre 10 MEGA Westgate & Henderson, we have everything you need to make your spring planting a success – from premium seeds and seedlings to quality soil, fertilisers, garden tools, and irrigation solutions. Whether you're starting small with a few pots or planning a full vegetable patch, our friendly team is here to share advice and help you grow your own delicious, fresh produce this season





Signature
HOMES


Custom

build your home


from \$385k

Talk to our local team today. We'll personalise a package that fits your lifestyle and

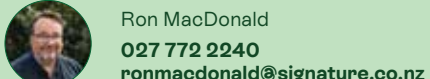
budget. Simple, stress-free and transparent from start to finish.




Signature Homes West & North-West
0800 020 600
saleswest@signature.co.nz



Hallie Cameron
027 507 9857
halliecameron@signature.co.nz



Ron MacDonald
027 772 2240
ronmacdonald@signature.co.nz



*excludes land and site costs

Understanding Auckland’s climate impact on septic tank cleaning

Summer months: Ideal for septic tank cleaning (December – February)

Summer presents optimal conditions for septic tank maintenance in Auckland. With average temperatures ranging from 20-25°C and minimal rainfall, the ground conditions are perfect for accessing and servicing your system.

During summer, the drier soil allows better access for vacuum trucks, and any minor excavation work needed around tank lids or inspection points is easier to complete. The lower water table also means your tank can be thoroughly cleaned without concerns about groundwater infiltration.

Autumn preparation: Smart septic tank cleaning (March – May)

Autumn serves as a crucial preparation period before Auckland’s wet winter months. With temperatures cooling to 15-20°C and rainfall beginning to increase, this season offers an excellent opportunity for maintenance before winter challenges arrive.

March and April provide good conditions for septic tank cleaning, as the ground remains relatively dry whilst temperatures are comfortable for outdoor work. This timing ensures your system has maximum capacity to handle increased water loads during winter.

Winter challenges for septic tank cleaning (June – August)

Winter presents the most challenging conditions for septic tank maintenance in Auckland. With average rainfall exceeding 140mm per month and temperatures dropping to below 0-15°C, careful planning becomes essential.

Winter septic tank cleaning requires special considerations. Saturated ground conditions can make access difficult, and high water tables may affect the cleaning process.

Spring recovery: Optimal septic tank cleaning Time (September – November)

Spring offers improving conditions for septic tank maintenance as weather patterns change. With temperatures rising to 15-18°C and rainfall beginning to decrease, September through November provides increasingly favourable conditions for comprehensive system care.

After enduring winter’s challenges, spring cleaning allows thorough assessment of any weather-related impacts on your system. This timing also prepares your tank for increased usage during summer months.



Young Learners

Embracing winter’s delights: The profound joy of mud play

As the seasons shift and the cooler, wetter weather settles in, it’s easy to succumb to the “winter blues” and retreat indoors. However, this time of year also brings with it the perfect conditions for a truly enriching outdoor experience: mud play. Far from being just a messy activity, engaging with mud offers a wealth of benefits for children’s holistic development, fostering a deep connection with nature and promoting profound mental and emotional well-being.

At Gumboots, we eagerly anticipate our annual Mud Day, an event where tamariki (children) and enthusiastic

kaiako (teachers) alike dive headfirst into the joyous, tactile world of mud. It’s a remarkable opportunity for children to be truly present, engaging all their senses with the slippery, sticky, and malleable qualities of this natural substance. Through this highly creative and expressive play, children gain confidence and control over their sensory experiences, developing fine motor skills and problem-solving abilities in an organic way.

What’s truly fascinating is observing the different approaches: some children are instant devotees, relishing the opportunity to get as gloriously messy as possible, whether making mud sculptures, mud cakes, or simply squishing it between their fingers and toes. Others start cautiously, gradually warming up to the unique sensory experience. And for those who initially resist, the gentle invitation to participate – perhaps just by touching a small amount or using a paintbrush – often leads to surprising moments of discovery and delight. As we often say, regardless of age, background, or

EVERYTHING TO DO WITH DRAINS 24/7

- ✓ Vacuum loading/suction ✓ Septic tank empty & council inspection
- ✓ Cesspit cleaning, pump chambers, grease trap cleaning
- ✓ Hydro excavation, pile holes ✓ Drain unblocking & root cutting
- ✓ CCTV locating & fault finding ✓ Drain repairs & maintenance



DRAIN NINJAS

LOCALLY FAMILY OWNED & OPERATED

drainninjas.co.nz

0800 4 NINJA 0800 4 64652

Email: admin@drainninjas.co.nz



First 6 Weeks Free for New Enrolments!!

Now enrolling for Infants and Toddlers

Great outdoor spaces

100% Qualified Teacher ratios

Open 7am - 6pm - choose your own hours

Call us to visit and meet the team

MUSIC

I play my Music in the Suu...uuu...

**Just minutes from Helensville / Waimauku / Kumeu
1157 Peak Rd The centre of everywhere Ph: 411 9038**

disposition, when we're covered in mud, we all look the same – a powerful testament to the unifying nature of this universal play.

The beauty of mud play lies in its simplicity and accessibility. All you truly need is mud itself. Whether it's adding water to a patch of grass in your backyard or utilising an already naturally muddy area, setting up a mud play zone is remarkably straightforward. Concerns about the aftermath are often quickly alleviated; with the return of warmer weather, any disturbed areas will naturally recover, and the grass will grow back. This makes it an ideal activity to replicate at home, requiring minimal resources but offering maximum engagement. For instance, a simple blow-up pool filled with dirt and water can easily become a dedicated mud pit.

For children who might be hesitant about a full-body mud immersion, there are equally valuable and creative alternatives. A container filled with mud, adjusted to the right consistency with a little water, can transform into an artistic canvas. Provide a paintbrush, and watch as they express their creativity, exploring textures and developing fine motor skills in a natural, open-ended way. This flexibility ensures that every child can find their personal level of comfort and engagement with the medium.

Embracing mud play isn't just about getting dirty; it's about fostering resilience, encouraging imaginative and collaborative play with friends, and nurturing a profound connection with the natural world. It's a free, enriching experience that contrasts sharply with the expensive "mud treatments" adults often seek, reminding us of the inherent value in simple, natural engagement. So, this winter, don't shy away from the mud – embrace its unpredictable charm and discover the profound joy and developmental benefits it can bring to your tamariki.

<https://www.gumboots.ac.nz/>
1157 Peak Road, Helensville
09 411 9038



Tapere | Children's Area - Level 1

Come along to our popular Storytimes where librarians, and sometimes, authors or other special guests read captivating stories. Ideal for kids 3-5.

Visit Te Manawa, 11 Kohuhu Lane, Westgate and pick up our August What's On brochure to discover more amazing events happening throughout August for all ages. Linktree: <https://linktr.ee/temanawa>

Circus fun at NorthWest these school holidays

Looking for school holiday fun? NorthWest Shopping Centre is bringing the circus to life with free daily workshops for kids.

From Monday 22nd September to Friday 3rd October, children aged 5-12 can make their own juggling balls and learn fun circus tricks.

Workshops run Monday to Friday, 11am-1pm, right in front of Customer Service – and no bookings are needed.

It's the perfect way to keep the kids entertained these holidays, and best of all – it's *completely free.

*Parental supervision required.

SCHOOL HOLIDAY FUN!

CIRCUS CRAFT FUN!

Enjoy FREE* School Holiday fun at NorthWest Shopping Centre!

Week One: 22nd September - 26th September

Week Two: 7th September - 11th October

20 minute sessions from 11am - 1pm Monday - Friday.

Come one, come all! Walk the red carpet and enter the NorthWest craft-circus where you'll learn how to make your very own circus juggling ball!

Children aged 5+.

Check our website for more details.

[northwestshoppingcentre.co.nz](https://www.northwestshoppingcentre.co.nz)

Love NorthWest

NORTHWEST

Aged care Winter warm-up at Craigweil House

What better way to beat the winter chill than with a shared lunch and some good company? The Craigweil House team recently came together for a cosy winter celebration. It was a much-needed break and a chance to catch up outside of our usual busy routines caring for residents.

With homemade treats and hearty favourites on the table, there was no shortage of good food or good laughs. It's not often we get to sit down together like this, so we made the most of every minute.

At the same time, there's plenty happening around the facility too. Renovations are currently underway as we prepare to expand the hospital care side of Craigweil House. We're looking forward to being able to support even more residents with the same level of care and comfort we're known for.

If you're considering care for yourself or a loved one, come by and take a look around. We'd love to show you what makes Craigweil House such a warm and welcoming place.

PH 09 4208277

COME VISIT US!
WE ARE LOCATED NEXT TO PARAKAI SPRINGS

Discover a warm and caring home, nestled within the Kaipara Coast and Parakai's geothermal waters.

Rest Home • Hospital • Day Stays

Craigweil House
Home & Hospital
FEEL AT HOME WITH FAMILY

NO PREMIUM ROOM CHARGES

HENRIKWEST
CARE GROUP

09 420 8277 | 143 Parkhurst Rd, Parakai | info@craigweilhouse.co.nz

Aged Care

Waitakere Grey Power Association

Waitakere Grey Power Association sadly lost Peter Harvey, who passed away recently after ten years on our Committee and as our Office Manager. We send our condolences to Jill Harvey and their family. May he Rest in Eternal Peace.

At our General Member's Meeting on Friday 26th September at 12.30pm at the Te Atatu South Community Centre, we invite Members and friends to come to hear our Guest speaker, Trish Fleming, Clinical Community Liaison Manager of West Auckland Hospice (which we assist with advocacy in terminal illness care).

At our Committee meeting in July we moved a resolution to post and email our August Newsletter. All subsequent Newsletters will be emailed. We urge members to give us their email address. We are keen for people over 50 years of age to join Waitakere Grey Power Association. We are your advocacy organisation and go to the Henderson Massey Local Board regularly with issues of concern in your community and also are progressing prostate cancer awareness and screening to Health New Zealand to do screening by blood test every two years. We have had the Rates rebate increase from \$790 to \$805 from 1st August 2025 and the income threshold for a married couple has been raised, allowing 60,000 more people throughout the country to be eligible for a Rates rebate from their Council. We have volunteers in our Office in the Te Atatu South Community Centre at 247 Edmonton Rd, Te Atatu South from 9.00 am to 12.00 pm Monday to Friday. Written by Mate Marinovich, President Waitakere Grey Power Association.

Recognising distance grandfathers

With Father's Day falling in September, it feels timely to put in a good word for distance grandfathers. It's often assumed that grandmothers take the lead in grandparenting—and in many cases, that's true. But from what I've observed, distance grandfathers are quietly proactive behind the scenes, contributing in ways that deserve recognition. While some husbands might be known for tuning out emotional conversations, many grandfathers are deeply engaged when it comes to their distance children and grandchildren. When the moment is right, they have thoughtful perspectives to share and play their part with quiet strength. Baby Boomer grandparents raised children in an era of more clearly defined gender roles, and this continues to influence how they grandparent—especially at a distance. Many couples take a team approach. They've weathered enough life together to understand how the other feels, and that mutual understanding is a source of great emotional support. When grandmothers travel solo overseas to help out with a baby it can be easy to overlook the grandfather's role. Yet their support is often vital. Some are still working to help fund the trip, while others manage at home, missing their partner and waiting patiently for updates and photos. Holding the fort is no small thing. So this Father's Day, let's acknowledge distance grandfathers—not just for what they do, but for the steady, dependable presence they provide. Their love may be quieter, but it's just as deep.

HelenEllis is a Hobsonville Point researcher, anthropologist and veteran of Distance Parenting & Grandparenting. Helen is the Founder of DistanceFamilies.com and author of 'Being a Distance Grandparent' and 'Being a Distance Son or Daughter', part of a three-part intergenerational book series..



KUMEU VILLAGE

Luxury Rest Home, Hospital,
Dementia and Respite Care

09 412 9112

www.kumeuvillage.co.nz



tributes

BIRTHS — DEATHS — MARRIAGES

The introduction, change, or loss of a family member or a friend can be influential in a range of ways. It can be felt as a wave of emotion or pockets of reflection.

Kumeu Courier and The Westerly Magazines offer the opportunity to reflect and celebrate the life, introduce the life, and showcase commitments made, providing a window into the life of someone loved and in a lasting showcase, be that half page, full page, or two page spread.

It is a way to share, reflect, celebrate and pour homage to someone or some-two, in a way that carries the essence and mana of life in a unique way and format.

Every story is unique, every life different.

To book a tribute within Kumeu Courier or The Westerly call Gabs on 0800 900 700 or email editorial@kumeucourier.co.nz

Danny Lendich tribute



Lendich Construction and Wendy's New Zealand founder, Danny (Danilo Stanislev) Lendich who died in May aged 81 was remembered at a special service at his Fred Taylor Drive-based business attended by nearly 1200 people.

Denny started business in 1956 at the age of 12 with a single bulldozer doing small earthmoving jobs for farmers and orchardists near his parents' (Filip and Ruze) apple and pear orchard in Moire Road, Massey.

He later established earthmoving and hauling company Lendich Construction and in 1988, with wife Dianne, opened his first Wendy's New Zealand franchise restaurant at Te Atatu, Auckland, with 24 others following.

Wendy's New Zealand was later sold to global franchise operator Flynn Group in May last year.

The Lendichs learned about the restaurant chain during visits to the United States for midjet car events.

Denny was a midjet car owner through D.L. Motorsports and sponsored drivers including Sleepy Tripp, Craig Brady, Jerry Coons Jr, Graham Standring (who was at the service), Sammy Swindell and Alex Bright, working on many of the cars.

Lendich Construction has been involved in a wide range of work such as Westgate's development, demolition of old theatres and buildings in Auckland, digging graves at Waikumete Cemetery, quarrying, gold mining, extending Samoa's airport in 1984 and helping recover an old schooner beached and buried near the Kaipara Harbour entrance for about 150 years.

Born in 1944 to Croatian parents who had emigrated to New Zealand prior to World War II, Danny had been using his family's tractor to work for local farmers before persuading his father to help him buy a small bulldozer.

Denny and his family have also operated service stations and own various properties in Auckland.

Denny died at his Auckland home on May 13, 2025.

He is survived by wife Dianne, daughters Danielle and Joanne, and grandchildren Savannah, Olivia, Denny, Roman and Ariana.



Health & Beauty

Grace Munro Medispa: A sanctuary for vibrant, aging skin

Women over 50 are embracing their beauty and vitality more than ever, and Debbie Craig understands this perfectly. With over 30 + years of industry experience, Debbie has dedicated her career to helping women achieve healthy, glowing skin to match their energetic lifestyles.

Debbie's journey began in the 1990s when she opened one of Auckland's first luxury beauty salons in Parnell. Today, she offers her expertise at Grace Munro Medispa—a private, discreet retreat, designed exclusively for women who value personalised care and results-driven treatments.

Located away from busy retail hubs, Grace Munro provides a serene environment for relaxation and renewal. Debbie emphasises privacy and limitations

on her clientele to ensure each client receives her full attention. Her philosophy focuses on powerful, effective facials tailored to promote drainage, cell production, and skin firmness.

Using advanced products like Medik8®, Debbie has seen remarkable improvements in her clients' skin—immediate responses that boost confidence and boost radiance. She is passionate about making a difference, especially for women whose skin may have become neglected but still holds the potential for rejuvenation.

More than just skin deep, Grace Munro promotes a holistic approach—creating time and space for women to relax, recapture their inner glow, and feel beautiful at every age. Debbie believes that looking good and feeling good are interconnected, and her treatments help women over 50 celebrate their timeless beauty.

Debbie Cralg's expertise and personalised approach make Grace Munro Medispa a true haven for women seeking genuine results and a moment of calm in their busy lives.

Grace Munro Medispa are one of the few proud stockists of Medik8® and offer their award winning treatments in the spa as well as being able to purchase their products on the Grace Munro online store.

To celebrate our new website we are offering all new customers to receive 10% off their first order. Visit www.gracemunro.co.nz and enter WELCOME10 at the checkout.

Medik8

MUNRO MEDISPA

Online Shop Open

Check it out!

10% off your first purchase with 'WELCOME10'

WWW.GRACEMUNRO.CO.NZ

60 CHURCHHOUSE ROAD GREENHITHE

JUMP ONLINE TO SHOP & BOOK YOUR NEXT TREATMENT

GRACE MUNRO MEDISPA

"Beauty begins the moment you decide to be yourself."

COCO CHANEL

Health & Beauty

Treating hair loss: Evidence-backed solutions for men and women

Dr. Cherie Wyatt-Hutana



Hair loss is a common concern for both men and women. The emotional toll can be just as real as the physical change, yet many people wait a long time before seeking help.

At Restore Cosmed, we offer support for hair loss that goes beyond surface-level solutions. Our approach is rooted in medical expertise, combining prescription medications with evidence-based treatments such as microneedling and exosome therapy to stimulate and strengthen hair growth while helping to prevent further loss.

Hair loss can be caused by a range of factors- hormones, stress, illness, nutritional deficiencies, or genetics. That's why we start with a thorough assessment and, where needed, investigations to get to the root of the problem. From there, we develop a personalised treatment plan tailored to your unique hair journey.

These treatments work best when started early, and many patients see noticeable improvements in thickness, density, and overall hair health with consistent care.

If you're concerned about hair loss, regardless of your gender, know that real, effective options are available. You don't have to wait until it gets worse.

Restore Cosmed – Cosmetic Medicine and Skin Health.

Book online at restorecosmed.co.nz .

RESTORE COSMED

SKIN AND MEDICAL

www.restorecosmed.co.nz
contact@restorecosmed.co.nz

20 Matua Road, Huapai.

Hear 4U Ltd. Bringing hearing care home: A local innovation in audiology

Did you know that West and Northwest Auckland are home to New Zealand's only fully mobile audiology service?

Local audiologist Lisa Greene is changing the way we think about hearing care. As an owner-operator, with over 25 years clinical experience, Lisa brings professional audiology services directly to your doorstep—no clinic visits, no travel arrangements, and no stress.

Whether it's a hearing test, ear wax removal, needing new hearing aids, help with existing hearing aids, or even adjusting your TV and phone settings to suit your hearing needs, Lisa does it all in the comfort of your own home. This personal approach means care is delivered in your real-life environment, with the added benefit of including family or loved ones in the process.

For many, this service is a game-changer. It's especially helpful for older adults, busy families, or anyone who finds it difficult to travel. Lisa's mobile service ensures that hearing care is accessible, supportive, and tailored to each individual.

If you or someone you know could benefit from hearing care at home, contact Lisa at Hear 4U Ltd.



HEAR 4U LIMITED

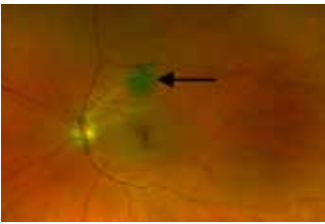
AUDIOLOGY AT YOUR PLACE
PERSONALISED HEARING CARE AT HOME

NEW HEARING AIDS
HELP WITH HEARING AIDS
HEARING ASSESSMENTS
EAR WAX REMOVAL

"Lisa is an Ear Angel. The 95 year old in our lives is happy hearing our conversations and the TV. This means better quality of life when you can't get out"

www.hear4u.nz 0800 119 510 021 2092687

Are your eyes healthy?



This month's case study on eye conditions features a common condition known as choroidal nevus recorded with our Optomap retinal scanner.

A choroidal nevus is a pigmented spot beneath the retina, often likened to a freckle in the eye. While commonly seen and usually harmless, it can occasionally develop into a more serious condition, such as melanoma. Early detection and regular monitoring are advisable.

The Optomap captures a wide-field, high-resolution image of the retina in seconds—without the need for dilation in many cases. This enables optometrists Molly and Matthew Whittington to clearly see the entire back of the eye, including the choroid, where these nevi are found. With regular scans, we can monitor any changes in size, shape, or pigmentation of a nevus over time.

Our patient is a young person with no history of eye problems. This is the Optomap image for the right eye, revealing a large, pigmented lesion nasal to the optic nerve head. With lesions of this type, it is important to establish their status – is it benign, and so unlikely to impact on other tissue, or does it have the potential to become malignant?

The Optomap diagnostic software offers several tools to utilise to aid in diagnosis.

• Magnifying the image greatly facilitates analysis of the course of the retinal surface blood vessels as they traverse the lesion. The magnified images for this patient clearly showed there was no sign of vessel deviation and hence the lesion is likely to be flat.

• Optomap images are recorded in two different focus depths. This lesion was clearly observed at the deeper level but was not visible at the retinal surface, suggesting the lesion is at choroidal level and does not invade higher levels, again suggesting it is flat.

The imaging is highly characteristic of a benign choroidal nevus and was not referred, but will be monitored at 1 year.

To schedule an appointment, phone (09) 4128172 or call into For Eyes Optometrists in the Kumeu Shopping Village.

FOR EYES
OPTOMETRISTS
EST 1993

- Advanced scanning equipment for early detection of cataract, glaucoma and macular degeneration
- Speciality assessment of child and adult reading difficulties
- Specific-tint lenses for Irlen Syndrome
- Lenses to correct red-green colour blindness

90B Main Road, Kumeu Shopping Village
www.foreyes.co.nz foreyes@foreyes.nz 09 412 8172

Ask Dr. Heather



I've heard Botox® can help with hayfever – is this true?

Anon, Whenuapai

As spring begins to bloom, so does the dreaded wave of hayfever. If you're one of the many New Zealanders who dread this time of year – itchy eyes, sneezing, runny

nose – you're not alone. And while antihistamines and nasal sprays are helpful for some, others find they barely scratch the surface.

That's where Botox® for hayfever, sometimes called "Haytox", is changing the game.

I know it might sound surprising – Botox® for hayfever? But the science is well-established. When a small amount of Botulinum toxin is placed inside the nasal passages (using a fine atomiser or applicator), it helps to calm the overactive nerve endings responsible for hayfever symptoms. The result? Less nasal congestion, reduced sneezing, and fewer tissues (hooray!).

I offer this treatment at ALLOR for people who've tried the usual approaches with little relief. It's fast, well-tolerated, and requires no needles in the face – just a simple in-clinic procedure with effects that typically last 3-4 months. That covers most of spring and summer.

Haytox isn't for everyone, and it's not a complete cure. But if your hayfever gets in the way of daily life, or you simply want to enjoy the outdoors without discomfort, it's worth considering. After all, spring should be a season to enjoy, not endure.

If you're curious whether Haytox could work for you, I'm happy to talk it through. Book a consultation, and we can create a plan that helps you breathe easier this season.

Dr. Heather Anderson is a Cosmetic Medicine and Emergency Doctor who practises in her own clinic at ALLOR Cosmetic Medicine in Whenuapai.

If you have a question for Dr. Heather you would like answered anonymously,

please email askdrheather@allor.co.nz.

ALLOR
COSMETIC MEDICINE

Dr. Heather Anderson
72 Waimarie Rd, Whenuapai
M: 0222626762
www.allor.co.nz

Area Columnists

Rodney's growth dilemma: Balancing ambition with reality



The Rodney district in Auckland's rapidly growing northwest is facing a perfect storm of financial and planning pressures. Rates have risen sharply, hitting households and businesses already grappling with higher living costs. While increases are often linked to citywide budget needs, for many

Rodney ratepayers the pinch is particularly acute because the return on those rates feels stretched thin.

Out-of-sequence residential developments are adding strain. Large-scale housing projects are springing up before the supporting infrastructure is in place – meaning more people on roads that can't cope, more demand on already limited community facilities, and growing frustration from residents. The area still lacks the sports, arts, and civic amenities expected of a region with this pace of growth. Yet at the same time, Auckland Council is rationalising its capital assets, selling or closing facilities to reduce debt.

Infrastructure deficits – from stormwater systems to public transport – continue to hold back both industry and housing. In particular, transport capacity is becoming a growth choke point. Without significant investment in roading upgrades, public transport options, and rail connections, Rodney's ability to attract and retain business will be hamstrung. Congestion isn't just an inconvenience – it's an economic brake.

There are, however, opportunities. Public-private partnerships could deliver much-needed facilities without overburdening the council's books. Collaborative models – whether for community centres, sports hubs, or even transport infrastructure – can leverage local investment and innovation.

Rodney is at a crossroads. Get the sequencing right, invest in the right infrastructure, and harness smart

GUY WISHART
FOR RODNEY LOCAL BOARD
KUMEU SUBDIVISION

"Experience you can trust"

Authorised by Guy Wishart: guywishart@yahoo.com

- Less extreme traffic congestion
- No more homes on flood plains
- More river and drain maintenance.
- Build infrastructure before houses.

partnerships, and this district can be a model for sustainable growth. Continue with reactive planning and piecemeal delivery, and we risk locking in problems that will take decades to fix.

For now, the conversation needs to focus on fairness, foresight, and a clear plan – before our growth outpaces our ability to live with it.

Guy Wishart

Spring Into pet care: Seasonal tips for health & happiness



As the days grow longer and the air gets warmer, spring is the perfect time to refresh your pet's routine. At Pet Patch, we know that just like people, pets respond to seasonal changes—and a few small adjustments can make a big difference in their comfort, health, and happiness. One of the most important things to stay on top of in spring is parasite protection. Fleas and ticks thrive in warmer temperatures, so now's

the time to ensure your pets are up to date with their treatments. We can help you choose the best option based on your pet's lifestyle and needs.

You might also notice more shedding at this time of year. Regular grooming helps keep your pet comfortable and reduces loose hair in the house. For pets with sensitive skin or spring allergies, we stock gentle shampoos and supplements that may help relieve itching and irritation.

Spring also brings more opportunities for outdoor adventures. Check that collars, leads, and harnesses are still secure and fit properly. Consider enrichment toys or treat puzzles to keep your pets mentally stimulated as they get more active. No matter what kind of pet you have, the Pet Patch team is here to help. Come visit us at our brand-new location at 1 Shamrock Drive, Kumeu—we'd love to help you make this spring your pet's best one yet.

PET PATCH
Your Local Pet Store

320 Main RD Huapai
09 412 2009
www.petpatch.co.nz

V2G unlikely here, says IT expert



Information technology (IT) specialist Steven Perreau says cost and complexity rule out any moves to introduce vehicle-to-grid (V2G) technology in New Zealand at the moment.

He doesn't know of any country supporting it, although trials are being held in some parts of the world.

However, Steven says solar power has gained significant traction in Australia and could provide a solution.

The Swanson resident's home features 34 rooftop solar panels covering the house and garage roofs, a storage battery, and two electric vehicles (EVs) - an MG4 and a Kia EV6.

Steven says direct current (DC) needs to be converted to alternating current (AC) to power the grid and a control system is required to "tell" the EV how much power is needed without depleting the EV's battery to the point where the vehicle cannot be used properly and to avoid impacting the rest of the grid.

"it's likely to be extremely expensive - if you can even buy it." He also reckons it's not in power companies' best interests to foster V2G, especially for profit.

Steven says some EVs can be used to power key appliances in a home which is subject to a power cut or blackout, particularly using extension cords.

But supplying the grid is fraught with problems, he says. Steven believes more households using solar energy is the answer.

He says a storage battery helps stabilise the grid, provides the house with power during a power cut and reduces or almost eliminates power bills..

Steven has criticised some previous Labour government electricity policy changes, especially around the phasing out by about mid-2027 of the "low use" electricity regulations which he believes will see the opposite of what is intended to provide new, fairer electricity pricing.

Local election candidates 2025

Plenty of candidates are standing for seats in Auckland local elections this year with postal voting running from Tuesday September 9 to Saturday October 11. Eleven are standing against Auckland Mayor Wayne Brown, while Greg Sayers is re-elected unopposed as Rodney

Ward Councillor. The 11 mayoral candidates include John Alcock, Eric Chuah, Michael Coote, Ted Johnston, Kerrin Leoni, Rob McNeil. Ryan Pausina, Jason Pieterse, Simon Stam, Peter Wakeman and Denise Widdison.



Rodney Local Board candidates for two Kumeu subdivision seats include Brent Bailey, Gemma Donaldson, Matt Ross, Zach Stark, Katie Versteeg and Guy Wishart.

Going for the one seat in the Rodney Local Board Dairy Flat subdivision) are Peter Brydon, Warwick Hojem and Lisa Whyte. Contesting two seats in the Rodney Local Board Northern Rodney subdivision are Greg Doherty, Joshua Grimstock, Paul Manton, James Pemberton and Colin Smith.

Also going for the two seats in the Rodney Local Board Southern Kaipara subdivision are Mark Dennis, Geoff Upson and Rob Upson while four candidates are seeking two seats in the Rodney Local Board Warkworth subdivision - Tim Holdgate, David Robb, Taabeta Tebau and Ivan Wagstaff.

Long-time politician Warren Flaunty of Taupaki is again standing for the Waitakere Licensing Trust's three Ward No. 2 - Lincoln - seats.

These are also contested by Ben Bergin, Linda Cooper, John Loau, Richard Ormiston, Jared Patterson, John Riddell and Gurdeep Talwar. The trust's one Ward No. 3 - Waitakere - seat has candidates Mark Allen and Toby Hyman.

Voting papers are sent to enrolled voters from Tuesday September 9 to Monday September 22 and election signs must be removed by 11.59 pm on Friday October 10, says Vote Auckland which has more information. Preliminary results are published on Monday October 13 and a final count is from Tuesday October 14 to Friday October 17 when official results are declared in a public notice, says Vote Auckland.

Kumeu Christmas Parade entries open

The Kumeu Rotary Christmas Parade goes the opposite way to normal on Kumeu's Main Street on Friday December 5, the road closing from 6pm.

Entry for parade participants opened from September 1 and the parade this year runs from the Kumeu Showgrounds in Access Road up State Highway 16 to the Tapu Road intersection in Huapai.

Kumeu Rotary has again made the parade possible with its generous support as principal sponsor, while thanks also go to the Northwest Country Business Association and Traffix Ltd for their sponsorship, says the organising committee which seeks further sponsorship to pay for the significant costs of running the parade each year.



they encourage community groups and businesses to join in.

"Entries do not have to include a vehicle - walking groups are welcome," say organisers. "It's a great way to promote a business or group to the community. Parade entries open September 1 via a link on the parade Facebook and Instagram accounts or via the website."

The route change will allow space for parade participants and floats to congregate safely in the showgrounds prior to the parade and at the end, and parade traffic can be more easily dispersed prior to the reopening of the road, says the organising committee.

Like previous years, the Main Road will close from 6pm and will reopen once the parade has cleared and the crowd dispersed, it says.

It generally takes about an hour for the parade to pass one spot with Santa's float usually the last one.

Spectators can view the parade from both sides of the main street and free public parking will be available at the Kumeu Showgrounds.

Information about the parade, route and traffic management updates will be posted on the Kumeu Christmas Parade website, Facebook page and Instagram account and shared on local community Facebook pages, says the organising committee, adding that businesses and homeowners whose access will be affected for the parade's duration will also be notified.

Strawberry season starts



Phil Greig of Phil Greig Strawberry Gardens in Kumeu is looking forward to plenty of the delicious summer fruit.

And he's got youngest daughter Brittany, pictured left, and daughter Michelle's husband Brett Swanepoel, right, to help grow the strawberries and

run the business, including the shop which has been open all winter and sells mainly real fruit ice-cream, gelato, specialty iced drinks and coffee.

Many frosts have been noticed by Phil this winter, which he says kills bugs and that the plants of mainly Camarosa, Monterey and Ventana varieties are doing well.

The strawberry season starts mid-September and Phil reckons plenty of fruit should be available for Christmas too. Supermarkets will largely dictate strawberry prices again which have remained much the same for 17 years, even though costs are up.

Phil's been growing strawberries for about 37 years and has about 14 hectares planted.

He has seen many other growers come and go in the area., along with a surge in "pick your own".

Justice of the Peace

Kumeu Library - Saturday between 10 and 12 noon

The J.P Service desk is at the Kumeu Library on a Saturday morning between 10am and 12 noon. There is no charge nor appointment needed for this service.

A J.P. can witness signatures on documents and certify copies of documents as true copies of originals or images viewable on a computer or smartphone screen

They also take declarations for documents requiring a Statutory Declaration and administer oaths or affirmation on court related documents requiring affidavits.

Some of the documents commonly presented requiring Statutory Declarations relate to

- Kiwisaver withdrawals
- Bank documents
- Change of name

There are some things people needing a J.P. need to note: If they want a printed copy of an original to be certified they must bring that original with them, or be able to show it on their smart phone for Affidavits or Statutory Declarations, the person making the declaration must be present.

Make sure the form is fully filled out and avoid signing the form before you come .

J.Ps are happy to see you at their homes providing you - phone first and make an appointment.

Names of all local J.P. can be found on the website www.jpfeb.org.nz or find a j,p,Auckland. Jim Coward J.P.



What’s on at Kumeū Arts



We currently have a superb display of ceramics in our Main Gallery, celebrating the depth and creativity of ceramic artistry. This popular exhibition offers visitors the chance to purchase unique functional and decorative clay works. Accompanying the ceramics is Grounded, a series of earthy, hand-ground pigment paintings by Steve Tollestrup that beautifully complement the tones found in the glazes. In the Pip Window, Leah Hartley’s ceramic series Growth Segments draws inspiration from plant debris, adding an organic dimension to the show. A vibrant selection of printmaking is also on display in the Pod. Exhibitions will change in the final week of September, making way for Awhi, a powerful group show by the Ten Last Strokes Collective, and a solo painting exhibition by Marion Stutz. For the school holidays, we’re offering engaging art workshops with Creative Matters. Live music also returns in September with Kumeu Live presenting Nashville-based songwriter Daniel Champagne.

Image attached is by Leah Hartley - Growth Segments.

Motutara-Waimauku Scouts races to an outstanding finish



The Motutara-Waimauku Scout group held their annual race night on Saturday 6th August at the Muriwai Links Golf Course. A fantastic evening full of laughs and excitement as the little wooden horses raced down the track. The betting was wild, drinks flowed, and the games provided awesome fun and competition from the crowd.

We would like to thank the following businesses and community groups that supported our event by sponsoring a table and helped to make this a really great event.

Wyatts Landscape Supplies Waimauku, Franklin Farms Hardfell Arborists, Power & Diesel Helensville, Waimauku Lions, Tanya Franklin Travel Brokers, Spiller & Spiller Bayleys Real Estate, Victor Sports Ltd.

The support and generosity from these and other local businesses allow us to continue to provide experiences and activities to the youth in our community.

We are incredibly proud to be part of such a wonderful and supportive community.

Motutara-Waimauku Scout Group

Sayers Says It

Greg Sayers is re-elected as Rodney Ward Councillor



Many Rodney residents have opened their latest Auckland Council rates bill to find increases of 20%, 30% or more – far beyond the 5.8% rise the public was told to expect during consultation earlier this year.

Both elected members and ratepayers have been blindsided. Franklin ward, at Auckland’s southern rural edge, faces the same problem. These rural areas, furthest from the CBD, are carrying a disproportionate share of the rates burden without any increase in council services. This is unfair and unreasonable.

The cause lies in Auckland Council’s capital value (CV) revaluation. Across Auckland, values fell by an average 9.1%. But in Rodney and Franklin, particularly rural and lifestyle areas, CVs remained steady or even rose.

Rates are based on relative property values. If an area’s CVs drop less than the Auckland average, that area ends up paying more of the city’s rates increase. Even properties whose CVs fell slightly still saw increases because Rodney’s overall values stayed high. The total amount collected by the council has not changed from what the average 5.8% rate increase was intended to raise across Auckland. Even properties whose CVs decreased were not immune from a rate increase of some amount.

Inner city suburbs saw minimal increases – Mt Roskill 1.9%, Royal Oak 1.5%, Mangere 1.0%, Point Chevalier 0.6%. In contrast, Rodney households face double-digit rises with no service improvements from the council. We are paying more while other parts of the city benefit.

Two key failings have caused this outcome:

Timing of CV release –The revaluation results were not made public until June, yet the public consultation about a 5.8% rate increase took place back in February. Therefore, elected members had no forewarning about the large drop in CV values or how they would affect Rodney – no warning to them, and equally no warning for the public.

No cap on annual increases – Without a maximum on the percentage amount rates can increase by extreme jumps are possible, as we have now seen.

I have written to the Mayor and Chief Executive calling for a cap on annual rates increases to prevent one area from being disproportionately hit. I am hoping this cap can be applied retrospectively to this year’s bills for immediate relief.

The CV revaluation process must also be aligned with the rates-setting timetable so results inform public consultation. Without this, we will repeat the same mistake every three years when CVs are recalculated.

If you believe your CV is inaccurate, you can request a

review from the Auckland Council, providing evidence such as recent sales data. While it may not reverse the increase entirely, it could reduce your rates bill if your CV is adjusted. I have already called an emergency meeting with Rodney Local Board members. We agreed a cap, earlier CV release, and a fairer distribution of rates are essential. Rodney’s communities must not be treated as the city’s ATM cash machine.

The Village Market Helensville Showgrounds

Sunday 21st September 8.30am to 1pm



Come and spend a relaxing Sunday morning with us and enjoy browsing the fabulous selection of stalls while you enjoy the country surrounds and live music from Kenny. We have local crafts & art, pet health care, jewellery, candles, preserves, gifts, cards, crochet, hand knits & spinning. Plus indoor & outdoor plants, locally grown fruit and vegetables, flower bouquets, fresh eggs, delicious coffee and food and much more.

No dogs please with the exception of assistance dogs. Gold coin donation for parking – proceeds to the Helensville/Kaukapakapa scouts and St John youth.

For more information contact sarah@riversidecrafts.co.nz

Mum Camp is back



An all-inclusive weekend in Muriwai to support, inspire, and nurture the person inside the role. Mum Camp is time out to hear experts talk about getting your sparkle back, to get tools to forge closer connections with our children, time to be creative, to be spoiled rotten, to chat with other women.

From 7 to 9 November, Mum Camp is a one of a kind, locally made, not for profit weekend for you.

The accommodation is true school camp style at secluded Houghton’s Bush Camp, but the food is next level. Gorgeous buffet style brekkies, delicious lunch and superb dinners with a highlight being Saturday night dinner by the divine Good From Scratch. There will be art tables, try something new movement workshops, fun, laughter and guest speakers including Jo from the

Happiness Project, and Tarisha from radiantwoman.co.nz. From Friday 7 November at 5.30pm until Sunday 9 November 12.30pm. Tickets including everything \$345 pp.

We would absolutely love to see you there. Tickets are already over half sold. Numbers are limited to 40. Read the testimonials and see photos of past Mum Camps on Facebook @ Mum Camp Muriwai and register, or email us on mumcamp.muriwai@gmail.com.

The Kumeū Hospice Op Shop – Great finds for a great cause



Discover a treasure trove of quality clothing, homeware, furniture and more at the Kumeū Hospice Op Shop. With something for everyone and stock changing daily, it’s the perfect place to shop local and find

a bargain. Best of all, every purchase enables Hospice to provide free specialist palliative care to our community. Donations of good quality items are always welcome – drop them in during opening hours or phone us on 0508 446 7742 to arrange a free pickup for large items or bulk loads.

The Kumeū Hospice Op Shop, open 9am – 5pm, 7 days at 46 Main Road.

Kumeu Library



Are you a keen writer wanting to share your work with others? Kumeu Library is hosting “Local Voices Unite” in September (date to be advised), an afternoon of spoken word and literary creativity where local authors, poets and wordsmiths can share

their stories and original works, be inspired by fellow writers, and be immersed in the beauty of language. Whether you’re a seasoned performer or a first-time reader, this will be a welcoming space to express your voice and connect with a community of passionate storytellers. You can contact us at Kumeu Library in person or by email (kumeu.library@aucklandcouncil.govt.nz) to register your interest.

Kumeu Library is always a great place to bring your tamariki for a visit in the school holidays, and during the September School Holidays we will have free activities for school-aged children every day at 10.30am. The fun includes Storytimes, movies and popcorn, mermaid cove craft, goofy robots, astronaut/space craft, circle and square art, games day and our popular Kahoot! Quiz.

There's no need to book, just show up at 10.30am on the day. You can pick up a brochure with what is on each day at Kumeu Library, or keep an eye on our Facebook page for up-to-date information. And there's fun to be had any time you visit the library during the school holidays, with our scavenger hunt, colouring pictures and puzzle pages to keep your tamariki entertained.

You can keep up with all Kumeu Library's news and events by following us on Facebook (www.facebook.com/kumeulibrary).

SH16 update



A last winter construction update on State Highway 16 work has been provided by the New Zealand Transport Agency. Up to 15,000 vehicles daily were detoured so the concrete bridge "stitches" at Berry Bridge, and Kumeu No. 2 Bridge, so they could cure while remaining unaffected by vibrations, it says.

The NZTA says work is on track to complete Stage 1 in the first quarter of 2026. "Concrete kerbs and asphalt along with landscaping, mulching and 8500 new plants have started to transform the busy 3.1km site into a glimpse of what SH16 will look like when works are completed," it says.

From May to July 2025 the NZTA says at the Waimauku to Foster Road end of the project the team has been underground and above ground with 780 metres of gas main diversions completed and 1900-tonnes of structural asphalt paved.

From Huapai to Matua Road 890-tonne of new widening pavement (including asphalt surfacing) west of the Coopers Creek vineyard to Kumēu 2 Bridge has been completed along with combined service ducting west of Trigg Road to east of Matua Road.

Kumēu No.2 Bridge approaches are ready for new pavement layers and culverts, retaining walls and bridges are in the mix with retaining wall 02 and the Joyce Adams Place culvert extension completed, says the NZTA.

"August to October 2025 will see completion of all new drainage works throughout the site, roadside safety barrier installation, 7000 tonnes of structural asphalt laid from Trigg Road, Huapai, to Factory Road, Waimauku, planting new trees and vegetation on the westbound side, complete modification of the southern side of Berry Bridge for installation of a new three-wave corrugated steel safety barrier that offers greater energy absorption for extra safety."

The NZTA suggests avoiding walking or cycling through the site while the road is narrower during construction, not to get distracted by moving machinery, and driving carefully while keeping to the 60 km/h speed limit.

Visit nzta.govt.nz/projects/sh16-brigham-creek-and-waimauku or email sh16safetyimprove@nzta.govt for more information on the Brigham Creek to Waimauku SH16 project.

Rodney Youth Small Project Fund: Supporting Local Youth Ideas

Got an idea for a new youth event, activity or programme in Rodney? The Rodney Youth Small Project Fund – supported by the Rodney Local Board – is here to help bring it to life!

We're backing exciting, youth-focused projects, events and activities that make a real difference for rangatahi across Rodney. If you're a young person (or work with young people) and have something fun, fresh or inspiring in mind, you can apply for support and funding to make it happen.

Not sure where to start? Our Youth Coordinator can support you to shape your idea into a simple plan and guide you through the process.

Applications close 3 October 2025

Projects must be delivered by 31 March 2026

Read the funding priorities first on our website, then send in your Expression of Interest.

Got questions? Email us at info@rodneyyouth.co.nz.



CALL FOR PROPOSALS

RODNEY YOUTH - SMALL PROJECT FUND

Scan the QR or visit our website.
Proposals due 3rd October 2025
Email: info@rodneyyouth.co.nz

www.rodneyyouth.co.nz

Supported & funded by:


Riverhead School's new classrooms open

Riverhead School has officially opened six new learning spaces in a two-storey building along with staff parking.

Principal Kris Hughes says the building, finished in September last year but not officially opened until June this year, replaces prefabs which are now used for art, science, and "EPro8" engineering, problem solving and innovation.

"We call it our mini Rocket Lab," she says.

Kris says she now has about 30 teaching staff (among 45 staff in total), and a roll around nearly 500 and that housing developments in the area (covering a range, including affordable housing) should help the roll grow.

She expects the total roll to eventually reach about 600 and that the school had provided for about 540 students before the COVID-19 pandemic.

Kris reckons collaboration is a key to success but she says Education Minister Erica Stanford's move to end open plan classrooms so all new ones are a "flexible design" are a step back to the 1980s.

She doubts Northwest schools were consulted on the change, one of about 17 mooted by the Coalition Government.

Erica says the Government is also investing about \$30 million over four years to allow roll growth in state integrated schools and \$120 million for Auckland to build more classrooms.

"All new classrooms will be built using standard designs that prioritise flexibility over open-plan layouts. For example, the use of glass sliding doors mean spaces can be open when classes collaborate but can also close for focused learning. This approach ensures schools have fit-for-purpose environments that support a range of teaching and learning styles."

Erica says noise and student behavioural issues were raised as key reasons for the change.

Cost is another factor – "In 2025, new classrooms cost on average \$620,000 compared to \$1.2 million at the end of 2023.



"Delivering these classrooms through repeatable designs and offsite-manufactured buildings also ensures we are achieving maximum value for money."

However, a three-story building to replace the last of the school's prefabs was not approved due to cost.

Kris says the first of two-stage development of a student's play area under the new two-storey building is expected to start in September.

She wants to see the entire school connected from north to south.

Kris went to China for seven-days in September last year to address the Shijinzhuang international Language School near Beijing as Riverhead School hosts about 120 international students annually from China and Japan.

She has seen many changes during her 17 years as principal at the school.

Riverhead School celebrated its sesquicentennial in 2022 with two days of activities.

Former principals Brenda Drew and Hare Paniora were among the many hundreds who attended, a cake cut by former pupil Mary Paoa who turned 100 in 2022.

A book called "Riverhead School and the community, Looking Back, 150-years of history and memories" was compiled by Denise Sole for the school to mark the occasion.

Chris Penk
MP for Kaipara ki Mahurangi

Here to help
134 Main Road, Huapai • christopherpenk@parliament.govt.nz • 09 412 2496

National
Authorised by Chris Penk, 134 Main Road, Huapai.



Your local lending specialists.

We finance almost anything.

- Vehicle loans
- Personal loans
- School supplies
- Business loans
- Holidays
- Debt consolidation

Apply online or visit our office at 82A Main Road, Kumeū.

mtf.co.nz/kumeu

Responsible lending criteria and checks, terms and conditions apply. See mtf.co.nz/terms

mtf
Your local money experts
KUMEŪ



WAIMAUKU AUTOMOTIVE

YOUR LOCAL FULL SERVICE WORKSHOP

WOF | Servicing | Mechanical Repairs | Courtesy Cars Available

TRADE TYRES IS NOW AT THE WORKSHOP!

www.tradetyres.co.nz or call us on 0800 54 55 56



ALL THE BIG BRANDS AT EVERYDAY
LOW PRICES

OVER 60 TOP BRANDS TO CHOOSE
FROM!



GOODRIDE
Premium Tyres

KUMHO
TIRES

petlas
TRUCK OF TRUST

GOPRO

PIRELLI

ROYALBLACK

Laufenn
Journey in Style

LAKESEA
TYRES

ATLAS
TIRES

MAXXIS
TYRES

NANKANG
TYRES

HANKOOK
driving emotion

Mark Ma

Continental

GOODYEAR

INTRODUCING OUR NEW PARTNERS!

THULE
SWEDEN



prorack
Ready for anything

AUTHORISED
DEALER

We are the
authorised dealer in
our area, come and
check out our new
SHOWROOM or see
the range online.

YAKIMA



INTRODUCTORY OFFER - 20% OFF RRP
on THULE, YAKIMA and PRORACK GEAR
ROOFRACKS | BIKE RACKS | ROOF BOXES & MORE